



**Program for
Global Learners
at OKAYAMA University
JAPAN**



**OKAYAMA
UNIVERSITY**

A four-year bachelor's program in English
Japanese-based coursework also available

Application Guide for 2020

International Admissions



APPLICATION PERIOD 1:

October 1, 2019 – November 5, 2019 (April or October 2020 admission)

APPLICATION PERIOD 2:

December 2, 2019 – January 31, 2020 (October 2020 admission only)

CONTENTS

About Okayama and Okayama University	2
Why come to Okayama?	3
Three reasons to study at Okayama University	3
Discovery Program for Global Learners	4-5
Your questions answered	6
Applying to the Discovery Program	7
Selection process	7
Important dates	7
Number of students to be accepted for 2020	7
Applicants with disabilities	8
Admission eligibility requirements	9
Application checklist	10
Interview guidelines	10
Application documents to submit by post	11-12
Application documents to submit online	13
Personal statement	14
Important notes for applicants	15
University policy on use of personal information	15
Accepting an offer of admission	16
Student visas	16
Fees	17
Scholarships and financial aid	17-18
Student Life	18
Housing	18
Estimated living costs for 2020	19
Campus facilities and services	19-20
Medical care and insurance	21
Admissions Policy	22



About Okayama and Okayama University

population of

720,000



a national university
established in

1870

1 hour

by train to
Kyoto and Osaka

276

average sunny
days per year

in the

TOP 2%

of research universities
worldwide



写真提供: 岡山県観光連盟

Why come to Okayama?

Convenient location

- Bullet trains with direct lines to Kyoto, Osaka, and Tokyo from Okayama Station
- Direct flights to Tokyo, Seoul, Shanghai, and beyond from Okayama Airport

Tradition and history

- Okayama castle
- Korakuen, one of Japan's three best traditional gardens
- Numerous temples, shrines, and museums all within reach

Comfortable climate, safe environment

- Mild climate year-round
- Affordable cost of living and low crime rate

City life

- Affordable Japanese and international cuisine
- Shopping, theaters, and outlet malls
- Sports grounds hosting the Fagianos, Okayama's professional soccer team



Three reasons to study at Okayama University

High-quality, affordable education

- 11 faculties and 8 graduate schools
- 9 to 1 student-faculty ratio
- Tuition scholarships or waivers available for qualified students
- Japanese language courses open to all students including beginners

Top-ranking research university

- Established history of nearly 150 years
- Internationally recognized for research in medicine, science, pharmacology, agriculture, and more
- Opportunities for undergraduates to engage in research through fieldwork and laboratory

Friendly and welcoming

- English orientation and support for students from 56 different countries
- 128 sports and culture clubs: something for everyone!
- Links with 310 partner institutions in 42 countries

13,012 students

10,113 undergraduates
2,899 graduate students
768 international students (student population as of May 2019)

91% satisfaction

among international students at Okayama University

Discovery Program for Global Learners

Program overview

- The Discovery Program is a **four-year bachelor's program** that can be completed entirely in English.
- Students with advanced Japanese proficiency (JLPT score N2 or above at the time of enrollment) may be able to pursue their studies in other Faculties at Okayama University if they are considered to have basic knowledge in their fields (see the program website for more detail).
- The program offers an interdisciplinary curriculum in natural sciences, social sciences, and humanities.
- Students develop a personalized curriculum that draws on two or more areas of concentration ("Cluster").
- Academic areas and modules available in English include:

Transdisciplinary Sciences for Global Sustainability

The environmental problems we face today increasingly require scientists to cross disciplinary boundaries and think across scales from local to global, and even to cosmic space. Knowledge and skills gained in environmental engineering, physical chemistry, solid state physics, and agricultural science are all necessary for pursuing a sustainable future of our planet.

Atmospheric and Astronomical Physical Chemistry/Solid State Physics

Tackle both the puzzles of the universe and environmental problems on earth by studying principles and methods of molecular spectroscopy shared by astronomical and atmospheric sciences.

Environmental Chemical Engineering

Study the fundamentals of biomass, bioenergy, and catalysis, which are expected to play major roles in future energy production and in the reduction of negative environmental impacts.

Agricultural Sciences (Basic Japanese proficiency required)

Examine the challenges of global issues such as food security and safety, environmental conservation, declining resources, and clean energy in courses related to agro-chemistry, plant science, animal science, and environmental ecology.

Social Innovation and Entrepreneurship

The world we live in today faces diverse issues – poverty, unemployment, discrimination, environmental degradation, and many more. Social innovation and entrepreneurship involves finding novel solutions to these issues at the local or global level.

Economics and Management

Build the foundation in economics and management needed to work for or to start up a business, nonprofit, or social enterprise.

Social Business and Entrepreneurship

Learn about the process of entrepreneurship as well as the skills and the strategies that innovative businesses use to solve social issues.

Philanthropy and Nonprofit Management

Explore the social, political, and economic roles of nonprofits in historical and contemporary settings, and the management skills of effective leaders.

Cultural Diversity and Communities

Global connections produce encounters with unfamiliar beliefs, customs and environments, but experiences of differences and “otherness” also exist within each of our own cultures. By studying concepts and methods in anthropology, sociology and political science, students will examine how today’s local challenges are embedded in the global context, and how locality can be the grounds for social change with global significance.

Japan and Beyond

Discover something familiar in the unfamiliar by comparing peoples and communities within and beyond Japan’s borders, as well as by reflecting deeply on one’s own culturally-constructed values.

Migration and Communities

Learn why migrants and refugees leave their homes, and how migration affects their lives, communities of origin, and host societies.

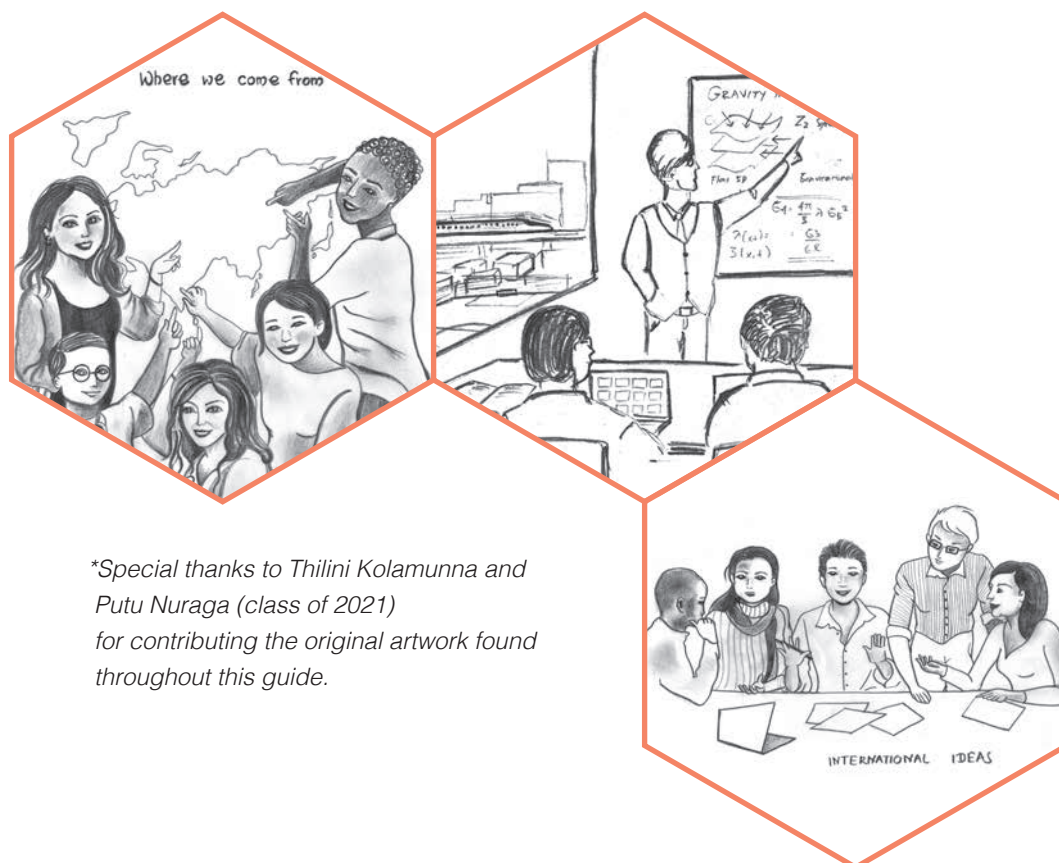
Environment and Health

Explore health and environmental issues from humanities and social science perspectives.

Governance

Examine how and why politics works in the way it does, and how politics influences and is influenced by norms, beliefs, interests, political institutions, economics, society, history, and power relations.

For more details on the program curriculum, visit our website at https://discovery.okayama-u.ac.jp/en/about_discovery/.



**Special thanks to Thilini Kolamunna and Putu Nuraga (class of 2021) for contributing the original artwork found throughout this guide.*

Your questions answered

Who can apply?

The program welcomes applicants of all nationalities from both Japan and abroad. Discovery students include international students from around the globe, returnees to Japan and graduates of high schools in Japan. The program accepts 33 students through international admission, and 27 through domestic admission each year.

Do I need to know Japanese?

Japanese language ability is not required to apply, except for those who wish to take courses in Japanese outside the Discovery Program. Japanese language classes are available to all students at Okayama University, including those who have never studied Japanese. Depending on their objectives, students may select skills-based classes (grammar, speaking and listening, reading and writing), integrated classes, or topics-based classes such as Japanese Culture and Society, and Japanese Through Film. Courses in academic Japanese training are also available to Discovery Program students who take coursework in Japanese.

English is not my first language. Can I take classes to improve my English?

Yes, students who wish to improve their English skills may enroll in English classes offered through the Discovery Program, or through the Center for Liberal Arts and Language Education.

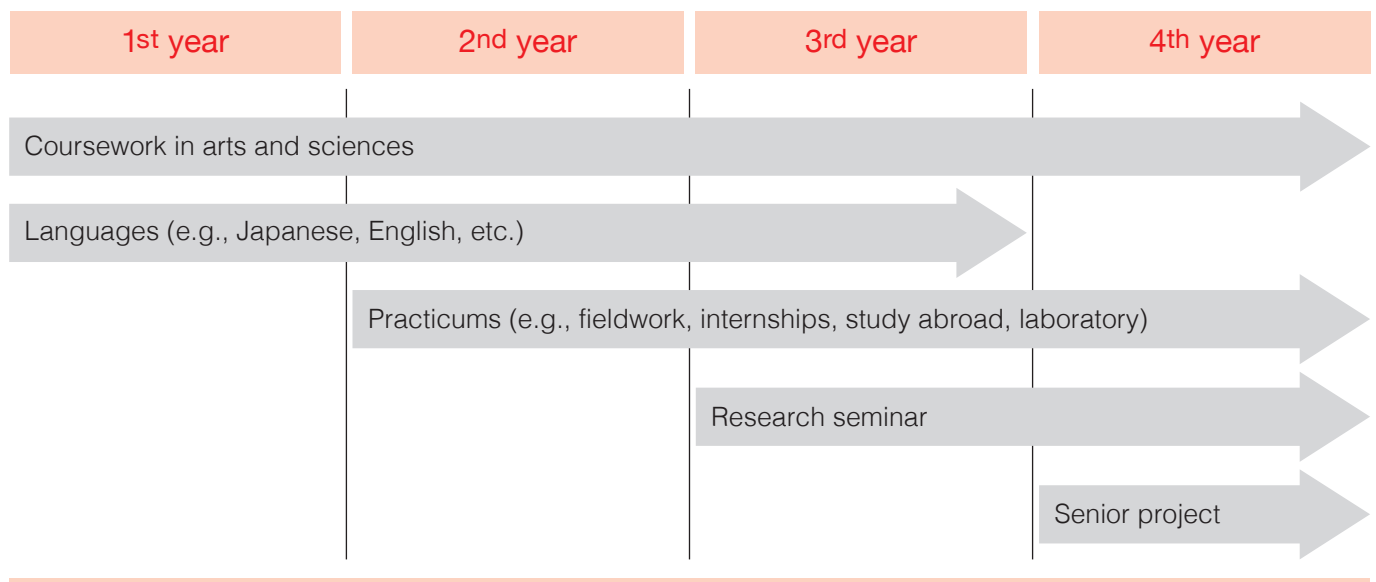
What is an interdisciplinary approach?

An interdisciplinary approach means students can create a personalized curriculum focused on their interests and career goals which may cross traditional department boundaries. Students can combine a liberal arts background (including courses from a range of disciplines) in their first year, with specialized knowledge in one or two areas.

What can I study?

All students work closely with an advisor to develop an individual study course leading to a senior project on a topic of their own choosing (see page 4-5). Students must demonstrate both academic knowledge and strong critical thinking skills by gathering, analyzing, and interpreting information, and presenting their findings to their faculty and peers. A full list of courses offered in the Discovery Program is available on our website.

Your four-year Discovery Program schedule might look like this:



What kind of job can I find after graduation?

The program emphasizes practical, hands-on learning skills including fieldwork, internships, study abroad, and laboratory. Students will learn to deal with complex issues from a variety of perspectives, and present creative, concrete solutions to real-life problems. Together with advanced language skills and cross-cultural experiences, Discovery graduates will be prepared for careers in a wide range of fields.

Applying to the Discovery Program

Selection process

Submission of application documents:

All applications and accompanying documents must reach our office by the deadline. Late submissions or incomplete applications will not be considered.



First screening:

The selection committee reviews application material and posts results of the first screening on our website. Successful applicants move on to the final screening.



Final screening (interviews):

Those who pass the first screening have interviews online or on campus. See page 10 for interview guidelines.



Successful applicants announced:

Results of final screening and passing rates posted online. Accepted applicants are notified individually by post, and are provided with detailed information on admission procedures.

Important dates

	Application Period 1 April or October Admission	Application Period 2 October Admission only
Application period	October 1, 2019 – November 5, 2019	December 2, 2019 – January 31, 2020
Results of first screening announced	November 22, 2019 (13:00 JST*)	February 21, 2020 (13:00 JST*)
Final screening (interviews)**	November 30 and December 1, 2019	March 8 and 12, 2020
Results of final screening announced	December 13, 2019 (13:00 JST*)	March 21, 2020 (13:00 JST*)
Deadline to complete admission procedures***	January 17, 2020	May 11, 2020

*JST: Japan Standard Time

**Applicants should check interview dates before applying, and ensure they will be available.

***Students who do not pass the final screening may be waitlisted and offered admission after the deadline to complete admission procedures. If openings are still available, an additional application period may be announced on the website around the end of May.

Number of students to be accepted for 2020

	April 2020 Admission	October 2020 Admission
Application Period 1	3 students	10 students
Application Period 2	not applicable	20 students

Applicants with disabilities

Applicants with disabilities should submit the necessary documents regarding reasonable accommodations for coursework by the deadlines below to ensure appropriate arrangements.

Deadline	Applicants for Application Period 1: September 13, 2019 Applicants for Application Period 2: November 15, 2019
Procedures	Complete the online Preliminary Consultation Form and submit it along with a doctor's note and a copy of your disability certificate (if issued) for consultation. Download: https://discovery.okayama-u.ac.jp/en/prospective_students/admission/
Submission	Email: admission_discovery@adm.okayama-u.ac.jp



Admission eligibility requirements

1	Students must satisfy ONE of the following requirements:	<ul style="list-style-type: none"> a) Complete a 12-year course of education as designated by the Ministry of Education in Japan or abroad prior to enrollment (students who have skipped grades are also eligible). b) Complete 11 years of education abroad, plus a Japanese university pre-session course designated by MEXT (Ministry of Education, Culture, Sports, Science and Technology of Japan). c) Earn certification or test results equivalent to a 12-year course of education outside of Japan, and be 18 years of age or older prior to enrollment. d) Complete 11 years of education as designated by the Ministry of Education in the Republic of the Union of Myanmar and earn a high school completion certificate. e) Earn an International Baccalaureate Diploma (IB Full Diploma) from the International Baccalaureate Organization. f) Earn an Abitur from the Federal Republic of Germany. g) Earn a Baccalaureate from the French Republic. h) Earn a GCE Advanced Level (GCEA) required for university matriculation in Great Britain and Northern Ireland. i) Complete 12 years of education in an internationally-certified program (WASC, CIS, ACSI).
2	Advanced Japanese language proficiency (for April admission ONLY)	<ul style="list-style-type: none"> • April applicants must pass Level 1 (N1) of the Japanese Language Proficiency Test (JLPT) or demonstrate similar ability in order to understand instructions and participate in school activities in Japanese including orientation. • Japanese language ability is NOT required for October admission.
3	Commitment to Okayama University	Applicants must have a strong desire to study in the Discovery Program for Global Learners at Okayama University and should be prepared to commit to enroll in the program if they are accepted.
4	Legal residence status in Japan (for applicants who do not have a Japanese passport or legal long-term residency)	Successful applicants must have a valid passport and obtain a suitable visa to study in Japan legally prior to the enrollment. For information on student visas, see page 16.

For questions on admission eligibility requirements, please contact the Discovery Office at admission_discovery@adm.okayama-u.ac.jp.

Application checklist

Details for each item are provided on page 11-13.

To be submitted online:

- ☐ Application form
- ☐ Personal statement
- ☐ ID photo
- ☐ Application fee

To be sent by post:

- ☐ Official transcripts
- ☐ School profile
- ☐ Certificate of graduation or statement certifying expected graduation date
- ☐ Letter of academic evaluation
- ☐ Letter of recommendation
- ☐ Standardized test results (where applicable)
- ☐ Official English proficiency test scores (where applicable)
- ☐ Proof of Japanese proficiency (where applicable)

Interview guidelines

- The Discovery Program conducts interviews in English in lieu of a written entrance examination.
- Students living in Japan will come to Okayama University for their interviews.
- For students living outside Japan, interviews will be conducted online via Skype or a similar method.
- Interviews will be approximately 20-30 minutes in length.
- Applicants may be asked questions about their interest in their proposed area(s) of study, and coursework taken to date to prepare for college-level study in these area(s).
- Students who wish to pursue their studies in other Faculties at Okayama University will be asked questions in Japanese about their desired fields of study.
- The Admissions staff will conduct pre-interview checks via Skype a few days before the Skype interview to troubleshoot connection problems. Applicants will be informed of the date and time of their pre-interview check and interview time via email.
- Applicants who do not complete the pre-interview check will not be allowed to conduct the interview.
- Applicants are expected to check their email regularly for updates throughout the application process, but particularly prior to the interview process. **Failure to respond to emails in a timely manner may result in an applicant being dropped from the selection process.**

Request for change of interview time

- The Admissions staff makes every effort to ensure that candidates are assigned reasonable interview times during daytime or early evening hours in their local time zone.
- We recognize that assigned times may sometimes require applicants to reschedule their regular daily activities. However, **requests for time changes will be considered only in extreme** cases such as illness, unavoidable emergencies, or other conflicts that would cause unreasonable inconvenience to the applicant.
- The Selection Committee will make the final determination on such requests, and may require documentation before giving approval for time changes.
- Applicants who need to request a change in their pre-interview check or interview time should contact the Discovery Office at admission_discovery@adm.okayama-u.ac.jp.

Application documents to submit by post

All application documents are available online at

https://discovery.okayama-u.ac.jp/en/prospective_students/admission/

1	Official transcripts (REQUIRED)	<ul style="list-style-type: none"> • If you have already graduated from secondary school, submit full transcripts of all courses taken in secondary school (most recent 2-3 years). • If you are still in secondary school, submit transcripts of all classes completed to date (most recent 2-3 years). • If you have attended more than one secondary school, submit transcripts from each school (most recent 2-3 years). • If you are currently in a tertiary and post-secondary educational institute, submit transcripts of all classes completed to date including transcripts of courses taken in secondary school. • Transcripts may be photocopies, but they must be enclosed in a sealed envelope and signed across the flap by a school official. • Transcripts in languages other than English or Japanese must be accompanied by an English or Japanese translation.
2	School profile (REQUIRED) <i>Use online form.</i>	<ul style="list-style-type: none"> • Complete the online form, enclose in a sealed envelope and ensure that it is signed across the flap by a school official.
3	Copy of graduation certificate or statement certifying expected graduation date (REQUIRED) <i>Use online form for statement certifying expectation graduation date.</i>	<ul style="list-style-type: none"> • Applicants who have already graduated from secondary school should submit a photocopy of their graduation certificate. • Applicants who have not yet graduated will be required to submit a copy of their certificate after arriving on campus. • Certificates in languages other than English or Japanese should be accompanied by an English or Japanese translation.
4	Letter of academic evaluation (REQUIRED) <i>Use online form.</i>	<ul style="list-style-type: none"> • The letter of academic evaluation must be written by someone at your secondary school (even if you are currently attending a tertiary institution) such as a school principal, counselor, or teacher, even if the evaluator does not know or remember you well. • The evaluator should confirm your years of attendance and graduation date, and provide information about your academic performance while at the school. • The letter of academic evaluation must be in English or Japanese.
5	Letter of recommendation (REQUIRED) <i>Use online form.</i>	<ul style="list-style-type: none"> • The letter of recommendation should be written by someone who knows you well and has interacted directly with you in a supervisory position at school, work, or through extracurricular activities - a teacher, manager, boss, coach, or advisor. • In addition to commenting on your ability to work independently, think creatively, communicate effectively, and maintain motivation, the recommender should also provide information about your personal interests, abilities, and accomplishments. • The letter of recommendation must be in English or Japanese.

6	Standardized test results (OPTIONAL)	<ul style="list-style-type: none"> • Applicants who have taken standardized exams typically used for university admission in their country, such as the SAT or ACT, may submit photocopies of official results. • Applicants who reside in countries where the Examination for Japanese University Admission for International Students (EJU) by the Japan Student Services Organization (JASSO) is offered may submit photocopies of official scores. • Applicants who have an International Baccalaureate (IB) Diploma may submit a photocopy of their diploma and an official certificate of their IB exam results, issued by the International Baccalaureate Office. • Applicants who have not yet received their IB Diploma may send official transcripts of IB predicted scores, endorsed by the principal or a guidance counselor at their school. Please note that once applicants are admitted, they will be asked to submit a photocopy of their IB Diploma and an official certificate of their IB exam results.
7	Official English proficiency test scores REQUIRED for applicants who have not received their last five years of formal education in English.	<ul style="list-style-type: none"> • Scores must have been received in the last two years. Unofficial score reports or photocopies are acceptable for the application process. Original certificates will be required at the time of enrollment. • The Discovery Program does not have minimum requirement scores. English ability is evaluated through standardized tests scores, writing samples, and interviews etc. • Students must submit scores from one or more of the following tests: Cambridge English/ The EIKEN Test in Practical English Proficiency (実用英語技能検定)/ GTEC Advanced or GTEC Basic or GTEC Core or GTEC CBT/ IELTS/ TEAP/ TEAP CBT/ TOEFL iBT/ TOEIC Listening & Reading Test and TOEIC Speaking & Writing Tests.
8	Proof of Japanese proficiency (for April admission ONLY)	<ul style="list-style-type: none"> • Applicants for April Admission must submit photocopies of N1 Japanese Language Proficiency Test (JLPT) scores, or other test scores or documents demonstrating similar ability. • Applicants for October Admission who have taken the JLPT are encouraged to submit their scores as optional material. Usually, N1 level proficiency is required to take coursework in Japanese.

Applicants outside of Japan should send documents via registered airmail such as Speed Post, DHL, FedEx, OCS, or EMS. Applicants in Japan should send documents via kakitome (書留).

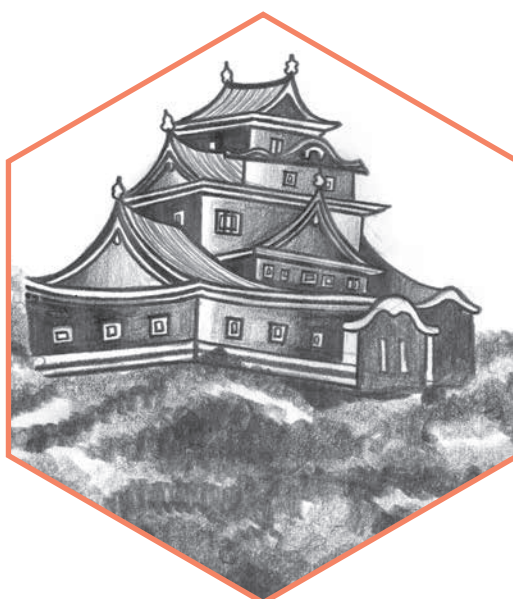
For questions on information not included in this guide, please contact the Discovery Office below:

Discovery Program for Global Learners, Okayama University
 2-1-1 Tsushima-naka, Kita-ku, Okayama 700-8530 JAPAN
 Tel.+81-86-251-7915 Fax.+81-86-251-7201
 Email: admission_discovery@adm.okayama-u.ac.jp

Application documents to submit online

Go to https://discovery.okayama-u.ac.jp/en/prospective_students/admission/

1	Okayama University application form (REQUIRED)	<ul style="list-style-type: none"> The application form MUST be completed online in one session otherwise information entered will not be saved. Save a copy of the completed form for your records. For details on the information required for the online application form, see page 14.
2	Personal statement (REQUIRED)	<ul style="list-style-type: none"> Download the file (Microsoft Word or PDF). Complete the personal statement in English. For more information on the personal statement, see page 14.
3	ID photo (REQUIRED)	<ul style="list-style-type: none"> Submit a color photo 4 cm long x 3 cm wide taken within the last 3 months, showing a front view without headgear (except for religious purposes) or sunglasses, above chest level, with a solid-color background. The photo will be used to identify the applicant at the interview.
4	Application fee (REQUIRED)	<ul style="list-style-type: none"> Submit the application fee of ¥17,000 via credit card using the online application system. If payment by credit card is not possible, please contact the Discovery Office at admission_discovery@adm.okayama-u.ac.jp for other payment options. The application fee cannot be waived or returned. The application fee cannot be refunded unless the application is incomplete, not accepted, or the fee is resubmitted in error.



Online application form

This form must be completed in one session. Collect all necessary information before starting:

- Name, current address, and phone number
- Emergency contact information
- Skype ID for students applying from abroad (Please create a free Skype account if you do not have one.)
- Desired area(s) of study within the Discovery Program. See our website for more details:
https://discovery.okayama-u.ac.jp/en/about_discovery/
- Full educational background from primary through secondary school, including school names, locations, and dates attended
- English language proficiency tests scores (where applicable), including date and location of test, scores, and registration number
- List of other standardized tests taken (OPTIONAL)
- Names of other universities you are applying to (OPTIONAL: your response will not affect your application)

When you are ready to begin the online form, go to <https://e-apply.jp/n/okayama-gdp>.

Personal statement

The Personal statement is a valuable opportunity for you to convince the selection committee that you would be a great candidate for the Discovery Program. Take the time to think carefully, and revise as needed before submitting your statement. Read through our website and other materials carefully in order to improve your understanding of the Discovery Program and write a successful Personal statement. In particular, read through the curriculum section on our website and explain concretely how our curriculum will help you meet your goals. We will evaluate your statement for content, quality, and clarity of writing.

Complete all sections in English. Respond to all questions. Part A and Part B should be written in an essay format. Although you may consult teachers, counselors, and friends, all final writing must be your own words. If we find plagiarism, including material copied from websites, your application will not be considered any further. If you advance to the interview stage, you may be asked to answer questions or elaborate on your statement.

Part A: Statement of Interest

Write a short essay of 450 to 500 words answering the following questions:

- What are your current interest(s) and goal(s)?
- What life experiences led you to your current interest(s) and goal(s)?
- What is your proposed course of study (e.g., “Track”/“Cluster” of the Discovery Program) ?
- How does your proposed course of study relate to your interest(s) and goal(s)?

Part B: Life Lesson

Write a short essay of 450 to 500 words answering the following questions:

- What has been the biggest challenge in your life?
- How have you overcome/ are you trying to overcome it?
- What life lesson have you learnt from these experiences, and how/ what can you contribute to others through this lesson?

Part C: Extracurricular Activities

List up to five extracurricular activities in descending chronological order with the most recent one first.

Extracurricular activities may be events, committees, clubs, sports, conventions, communities, internships, jobs, study abroad, CAS (Creativity, Action, Service) activities, and volunteer work you have been involved in. Mention your assigned responsibilities and/ or leadership roles. State awards, qualifications, or certificates if you earned.

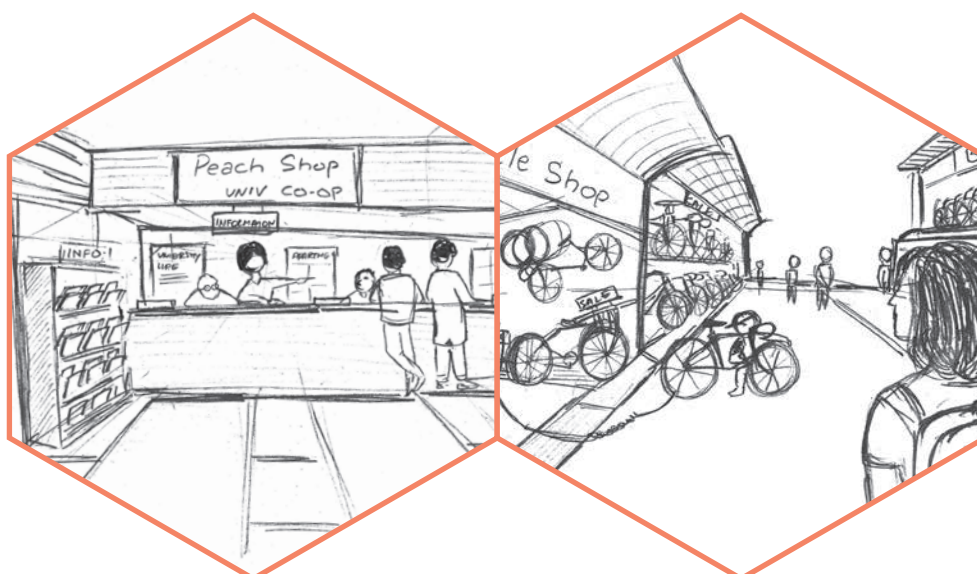
Important notes for applicants

- Applications must arrive at our office by 17:00 (JST) on the last day of the application period. Incomplete or late applications will not be considered. It is the applicant's responsibility to ensure that all required documents reach the Discovery Office by the deadline.
- Applications may be rejected at any time, including during or after admission or enrollment, if it is determined that the applicant has made a false statement on any part of the application material.
- If a document with a former name is submitted, please attach a document stating both the former and current names, and the date of the name change.
- Applicants may reapply only if one or more items in the application packet is updated or revised. In this case, all documents must be resubmitted, and new application fees will apply.

University policy on the use of personal information

Personal information contained in application material will be used only for the selection of applicants, university administrative procedures, or as data for the purpose of evaluating and improving the university selection process and educational system. When personal information is used in a publication, it must be presented in such a manner that individuals cannot be identified. In addition to the selection process, personal information may be used for the following purposes:

- Information required by the University Students Affairs System, including the names, birth dates, and gender of successful applicants.
- Assessment results required to determine the academic qualifications of successful applicants who apply for admission fee exemption or postponement, or tuition waivers.
- Information required by the University Management System to process university tuition fees and tuition waivers including the names, birth dates, and gender of successful applicants.



Accepting an offer of admission

A detailed Admissions Guide will be sent to successful applicants along with the announcement of final results. Students who wish to accept their offer of admission must submit the following documents by post, ensuring they arrive by the deadlines listed below.

- Receipt for payment of admission fee (see page 17)
 - *If the admission fee is revised prior to admission, the new fee will apply.
- Original certificate of English language proficiency test scores (where applicable)
- Photocopy of IB Diploma and official certificate of IB exam results (where applicable)
- Other material as designated or requested by the university

Deadlines for receipt of all documents

Application Period 1	January 17, 2020
Application Period 2	May 11, 2020

- Please note that accepting an offer of admission requires remitting the admission fee AND submitting all above documents by the deadline.
- If an applicant fails to complete all admission procedures by the deadline, he or she will be considered to have declined the offer of admission.
- In rare cases, admission fee exemption or postponement may be granted. Details are provided in the Admissions Guide sent to successful applicants.
- Applicants who complete the admissions process but wish to decline admission later must first contact the Discovery Office by email, and then submit by post a letter of request to decline admission to the President of Okayama University. The letter must reach our office by March 31, 2020 for April admission, and by September 30, 2020 for October admission. The letter must include the following information:
 - application number
 - name of the program the applicant was accepted
 - date the letter was written
 - reason for declining admission
 - applicant's signature

*An applicant will be permitted to decline admission only after his/her request to decline is approved.

Student visas

All international students must have a student visa to study in Japan. Students must have a valid passport to begin the visa process. The university will contact students approximately two to three months prior to the start of their first term to begin the application process.

*Students who have a Japanese passport do not need to apply for a student visa.



Fees

Admission Fee

- There is a one-time fee of **¥282,000 (2020 estimate)** to be paid shortly after an offer of acceptance is made.
- Admission fee exemption is offered only in very rare cases.
- The university does not offer scholarships to cover the admission fee.
- Students who have trouble meeting the deadline due to financial difficulty may apply for a postponement. If granted a postponement, the student is still responsible to cover the admission fee after arriving on campus.
- If the admission fee is revised prior to admission, the new fee will apply.

Tuition

- The annual tuition fee of **¥535,800 (2020 estimate)** is paid in two installments of ¥267,900 (2020 estimate).
- The first tuition payment is not due until after arrival on campus.
- If the tuition fee is revised prior to admission or while the student is enrolled, the new fee will apply.

For more information about fees, visit the website below:

https://www.okayama-u.ac.jp/eng/international_admissions/Tuition.html

It is important that new students arrive on campus prepared to cover all education fees and living expenses. Okayama University has some funding sources available; however, students are highly encouraged to seek out options through other government or private funding sources.

Scholarships and financial aid

Discovery Scholarships

- **Four full-tuition scholarships** will be awarded to outstanding applicants accepted through international admissions for April 2020/October 2020. These awards will be announced in conjunction with the announcement of application results.
- Applicants who apply via international admissions **during the first application period will have priority**. If scholarships are not awarded during the first period, applicants who apply during the second period will be considered.
- The scholarship may be renewed for up to four years provided the recipient maintains excellent academic standing.
- Scholarship recipients must be non-Japanese citizens or Japanese citizens with dual nationality, and may not be receiving full scholarships from other government or private sources for undergraduate studies in Japan.

Okayama University Tuition Waivers

- All accepted applicants are eligible to apply for tuition waivers. Applications are submitted after arriving on campus. Discovery faculty and staff will assist students with the application process during orientation week before classes begin.
- The university may award either **full or partial tuition waivers**.
- Students who apply for tuition waivers are granted a grace period for their tuition fee payment until they receive notification of the application results.
- Tuition waiver applications must be submitted each semester.

JASSO Scholarships

- JASSO (Japan Student Services Organization) also offers scholarships for international students who are residing outside of Japan at the time of international admission to a Japanese university.
- Okayama University applies for this scholarship on behalf of eligible students. Successful applicants receive **a monthly stipend of ¥48,000 for the first twelve months for April admission, and for the first six months for October admission** after arrival.
- All applications for eligible international students in 2017 and 2018 were successful.

Other Scholarships for International Students

- Other scholarships and financial aid schemes which international students may apply for are listed on the website: http://www.okayama-u.ac.jp/eng/current_students/Scholarship.html

Scholarships for Japanese Students

- Scholarships and financial aid schemes which Japanese students may apply for are listed on the website (in Japanese): http://www.okayama-u.ac.jp/tp/student/seikatu_a2.html

Student Life

Housing

On-campus housing

International Student Shared House

International students residing outside of Japan at the time of application in the Discovery Program have priority for the International Shared House. If space is not available, some students may be housed in other dormitories on campus.

Eligibility	Number of units	Area	Floor
Single international students	30 units (four students per unit)	Common space: 29.6m ² Private room: 7.9m ²	1st~5th

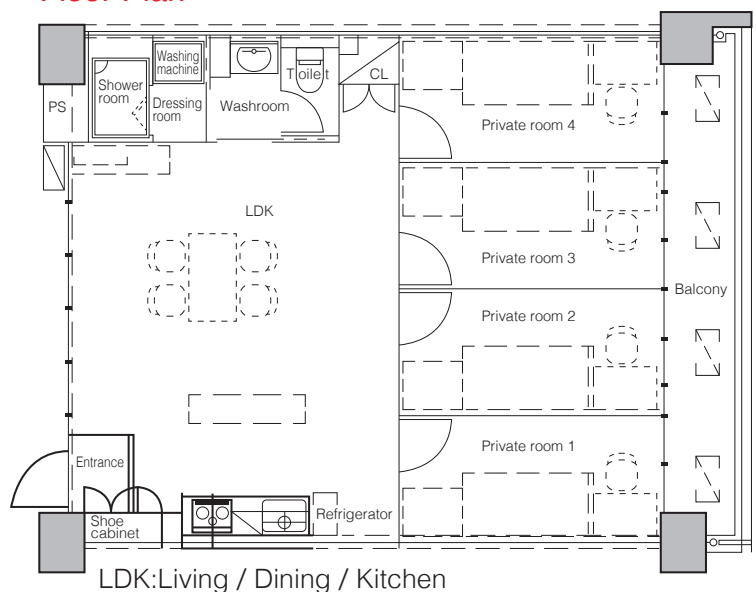
- Each unit includes four furnished single-occupancy private rooms and a shared common space. Four students of the same gender share each unit.
- Rent: ¥23,000/month (subject to change)
 - *includes internet, does not include utilities.
 - *on-campus housing does not include meals.
- A non-refundable one-time deposit of ¥30,000 (subject to change) will apply to all new residents.
- Length of stay: 5 months (minimum) to 1 year (maximum) for April admission, and 6 months for October admission (subject to change).

Furnishings:

- shared common space: shoe cabinet, curtains, heater/air-conditioner unit, shower room, washroom, toilet, kitchen facilities, refrigerator, microwave, kettle, dining table with four chairs, washing machine, vacuum cleaner, washing lines (on balcony), and internet access point (Wi-Fi)
- private rooms: desk, chair, bookshelf, closet, single bed, curtains, heater/air-conditioner unit, and internet access points (both wired and Wi-Fi).

*Bed linen and blankets can be purchased prior to move-in.

Floor Plan



For more information, visit the website at

https://www.okayama-u.ac.jp/eng/current_students/Dormitory_for_International_Students.html

Off-campus housing

- Students who wish to rent an apartment off-campus can contact the University Co-op for assistance. For more information, visit the website at https://www.okayama-u.ac.jp/eng/current_students/Housing.html.
- Private apartments near campus typically range from ¥30,000 to ¥60,000. Security deposits and non-returnable fees totaling up to 4 months' rent are common.

Estimated living costs for 2020 (subject to change)

	Monthly costs	Annual costs
books and supplies		¥50,000~
rent (International Student Shared House)	¥23,000	
utilities	¥10,000	
food	¥30,000	
health insurance	¥ 1,800	
personal Wi-Fi / phone	¥10,000	
miscellaneous expenses	¥10,000	
TOTAL	¥84,800	¥50,000~

It is recommended that you bring about ¥100,000 with you to cover initial expenses.

Campus facilities and services

University Co-op

The Co-op has three locations on Tsushima Campus: Peach Union, Muscat Union, and Pione Union.

The Co-op provides the following services and facilities for students:

- Subsidized cafeterias offering a range of options including vegetarian and halal dishes
- Campus bookstore
- Convenience store, travel center, and barber shop
- Housing services and ticket sales

L-Café

The L-Café offers an open, friendly, and supportive environment for students studying Japanese, English, and other languages. The Nihongo (Japanese) café, held twice a week, gives students a chance to practice their language skills and learn about Japanese culture. All students are welcome to drop by during opening hours, or check the calendar for scheduled events.

Website: <https://www.iess.ccsv.okayama-u.ac.jp/lcafe-e/>

Center for Career Services

The center provides support for career development and individual consultation.

Clubs and Circles

With a range of sports and culture clubs, including martial arts (e.g., karate, aikido), tennis, photography, tea ceremony, dance, and music, every student will find something of interest.

University Libraries

- Okayama University libraries have the largest collection of books in Okayama.
- Students have access to the Central Library (Tsushima Campus), Shikata Branch Library, and the Institute of Plant Science and Resources Branch Library.
- The recently renovated Central Library includes rooms built with local Japanese cypress wood, creating an aromatic space especially conducive to studying.
- Students may use the Learning Commons for group study and conversation, or separate areas for quiet self-study.
- Accepted students may use the university library prior to enrollment. Detailed information is available on the University Library website at http://www.lib.okayama-u.ac.jp/index_e.html (English) and <http://www.lib.okayama-u.ac.jp/index.html> (Japanese).



Medical care and insurance

Health Center

The Health Center offers periodic medical exams, health consultations, and other services free of charge. When necessary, the center makes referrals to local hospitals.

National Health Insurance

- International students who have been granted a visa valid for more than 3 months are required to join the National Health Insurance system regardless of their visa status (those on short-term or diplomatic visas are exempt), even if they are already covered by insurance in their own country.
- Applications are accepted at the municipal office. More details will be provided during the on-campus orientation.
- Health insurance premiums for students are about ¥1,800 per month and cover approximately 70% of all medical costs including hospitalization and dental care.

Personal Accident Insurance for Students Pursuing Education and Research (*Gakkensai*), and Liability Insurance coupled with *Gakkensai* (*Futaibaiseki*)

- The university offers Personal Accident Insurance for Students Pursuing Education and Research (*Gakkensai*) and Liability Insurance coupled with *Gakkensai* (*Futaibaiseki*), provided by Japan Educational Exchanges and Services (JEES). This insurance is available to all students for an estimated one-time cost of ¥4,660 (subject to change). It covers accidents and emergencies which may occur while engaged in educational or research activities while enrolled at Okayama University.
- Insurance premiums for *Gakkensai* and *Futaibaiseki* are extremely low, and can provide peace of mind to students and parents. In preparation for unforeseen accidents or other emergencies, all students are highly encouraged to enroll. *Gakkensai* and *Futaibaiseki* are required for enrollment in many Discovery classes including laboratory, fieldwork, and internships.



Admissions Policy

The Discovery Program for Global Learners is based on collaboration and mutual learning among students of diverse backgrounds, including international students, Japanese returnees, and graduates of high schools in Japan. The program emphasizes practical learning including internships and fieldwork. Students acquire specialized knowledge through courses suited to their future goals without the restraints of faculty or departmental divisions. The university offers courses to help students discover areas they wish to explore, forging their own paths toward the future. While cooperating with others from different cultures and backgrounds, students acquire the global and practical discernment to enable them to act skillfully in problem-solving situations.

Students are encouraged to acquire specialized knowledge and skills through a unique program of courses of their own choosing. At the advanced stage of their learning, all students undertake a senior project. This project gives students the opportunity to further develop the ability to analyze information in a multifaceted and creative manner, and transmit precise information effectively. Students grapple with an individual research theme, which they decide for themselves under the guidance of an advising professor. Essentially, the Discovery Program helps students gain the ability to initiate action for social innovation from the local to the global level, thereby developing young leaders who are capable of contributing to the sustainable development of global society.

Profile of Exemplary Candidates:

- *Students who show interest in diverse cultures and societies, and have a desire to play an active role on the global stage.*
- *Students who are willing to actively study a broad range of fields, including foreign languages, on their own initiative.*
- *Students who are able to communicate with others well, and are prepared to tackle complex issues by cooperating with their peers.*

In order to actively participate in the program, applicants are expected to have:

- *Sufficient English ability to take part in problem-solving activities in collaboration with students from multicultural backgrounds.*
- *The ability to formulate personal opinions and communicate their views clearly to others.*
- *Basic knowledge and study skills required for successful learning in their selected field.*





University Mark

OKAYAMA UNIVERSITY

DISCOVERY PROGRAM FOR GLOBAL LEARNERS

2-1-1 Tsushima-naka, Kita-ku, Okayama 700-8530 JAPAN
 Tel.+81-86-251-7915 Fax.+81-86-251-7201
 Facebook: <https://www.facebook.com/discovery.at.ou/>
 Email: admission_discovery@adm.okayama-u.ac.jp

<https://discovery.okayama-u.ac.jp/en>

Discovery Program for Global Learners

Search

