



Program for
Global Learners
at OKAYAMA University
JAPAN



A four-year bachelor's program in English

*The option to study in Japanese outside the program is available.

Application Guide for 2024

International Admissions

APPLICATION PERIOD 1:

October 2, 2023 – October 31, 2023
(April or October 2024 admission)

APPLICATION PERIOD 2:

December 1, 2023 – January 19, 2024
(October 2024 admission only)



CONTENTS

About Okayama and Okayama University	2
Why come to Okayama?	3
Three reasons to study at Okayama University	3
Discovery Program for Global Learners	4
Japanese language courses at Okayama University	7
Frequently asked questions	8
Applying to the Discovery Program	9
Selection process	9
Important dates	9
Number of seats available for 2024 Admissions	9
Admission eligibility requirements	10
Application checklist	11
Interview guidelines	11
Application documents to submit by post	12
List of accepted English proficiency tests	14
Accepted English proficiency tests and their CEFR equivalent levels	15
Application documents to submit online	16
Online application form	16
Personal statement	17
Important notes for applicants	18
University policy on the use of personal information	18
Applicants with disabilities	19
Disclosure of exam information	19
Accepting an offer of admission	19
Student visas	20
Fees	20
Scholarships and financial aid	21
Student Life	22
Housing	22
Estimated living costs for 2024	23
Campus facilities and services	24
Medical care and insurance	25
Admissions Policy	26

Important Notice

All important information concerning the entrance exam including announcements related to disasters or infectious diseases is posted on our website.

<https://discovery.okayama-u.ac.jp/en/>

If an applicant commits or attempts to commit a fraudulent act or disobeys a supervisor's instructions, the applicant will be disqualified from the admissions selection process and a police report may be filed.

Updates regarding special measures to prevent the spread of COVID-19 will be announced on our website.

About Okayama and Okayama University

population of

720,000

established in

1870



1 hour

by train to
Kyoto and Osaka

276

sunny days per
year (average)

in the

TOP 2.5%

of research universities
worldwide



Why come to Okayama?

Convenient location

- Bullet trains with direct lines to Kyoto, Osaka, and Tokyo from Okayama Station
- Direct flights to Tokyo, Seoul, Shanghai, and beyond from Okayama Airport

Tradition and history

- Okayama castle
- Korakuen, one of Japan's Three Great Gardens
- Numerous temples, shrines, and museums

Comfortable climate, safe environment

- Mild climate year-round, facing the Seto Inland Sea
- Affordable cost of living and low crime rate

City life

- Affordable Japanese and international cuisine
- Shopping, theaters, and outlet malls
- Sports grounds hosting the Fagianos, Okayama's professional soccer team



写真提供:岡山県観光連盟

Three reasons to study at Okayama University

High-quality, affordable education

- 9 schools/1 faculty and 7 graduate schools
- 9 to 1 student-faculty ratio
- Tuition waivers and scholarships available to eligible students

Top-ranking research university

- Established with a history of 150 years
- Internationally recognized for research in medicine, science, pharmacology, agriculture, and more
- Committed to pursuing sustainability in line with the United Nations Sustainable Development Goals (SDGs)
- Numerous fieldwork and laboratory opportunities for undergraduates

Friendly and welcoming

- English orientation and support for students from 66 different countries
- 125 sports and culture clubs: something for everyone!
- 371 partner institutions in 52 countries

13,225 students

10,121 undergraduates
3,104 graduate students
911 international students
(student population as of May 2023)

SDGs Partnership Award

Honored with a special award in the first Japan SDGs awards (December 2017) for aligning our entire educational program with the SDGs

Discovery Program for Global Learners

Program overview

>90%

of classes have less than 25 students

>35

different nationalities

35:25

international : domestic admissions

ENGLISH and JAPANESE

The Discovery Program for Global Learners is a four-year undergraduate program that can be completed entirely in English. Alternatively, students with advanced Japanese proficiency have the option of taking courses in Japanese and even conducting their senior project in Japanese. Intensive Japanese language courses are also offered to help students adapt to life in Okayama.

INTERDISCIPLINARY APPROACH

The program offers courses from a wide range of disciplines, including social sciences, humanities, and natural sciences. Its open curriculum allows students to develop a personalized study program that combines courses from different disciplines and fits their individual academic interests and future goals.



Subjects taught in English

Social Innovation and Entrepreneurship

The world we live in today faces diverse issues - poverty, unemployment, discrimination, environmental degradation, and many more. The Social Innovation and Entrepreneurship Cluster aims at working out sustainable and scalable solutions to persistent social issues.

Management

This module offers courses that introduce the tools and principles to improve and enhance management skills, expertise, and knowledge that facilitate career development.

Economics

This module provides students with a foundation in economics to prepare them to work for a business, government, or nonprofit organization. In addition to learning basic economic principles in microeconomics and macroeconomics, students explore poverty, inequality, and development from different perspectives.

Nonprofit Management and Social Entrepreneurship

This module provides students with opportunities to learn how to change society for the better as visionary leaders or social entrepreneurs. Students explore the social, political, and economic roles of nonprofits while learning professional and management skills through an interdisciplinary approach that utilizes hands-on group projects in collaboration with local nonprofits and practical step-by-step exercises.

Cultural Diversity and Communities

Sociology, anthropology and political science offer us tools to understand beliefs and practices around the world, and question our own values. In this cluster, students learn how to examine mundane matters such as work and family life, as well as extraordinary situations such as disasters and displacements, and analyze them from various vantage points, incorporating gender, sexuality, identity, social networks, and structural inequality.

Japan and Beyond

There are many cultural groups in Japan. What we often call “Japanese culture” is never singular or static. In this module, students learn how multiple cultures and shifting identities mingle in Japan and beyond.

Migration and Communities

Migration opens doors to new encounters, opportunities, and risks. In this module, students learn why migrants and refugees leave their homes, and how migration affects their lives, communities of origin, and host societies.

Environment and Health

In this module, students explore how beliefs about health and environment in different cultures are rooted in different ideas about “humans,” “personhood,” and “nature.”

Governance

Politics exists wherever people live together. Courses in this module explore how politics works in different communities, the reasons for these differences, and our own roles in politics.

Transdisciplinary Sciences

The environmental problems we face today increasingly require scientists to cross disciplinary boundaries and think across scales from local to global, and even to cosmic space. Knowledge and skills gained in environmental engineering, physical chemistry, solid state physics, and agricultural science are all necessary for pursuing a sustainable future of our planet.

Atmospheric, Astronomical and Biomedical Physical Chemistry

Many puzzles of the universe and many environmental or health problems can be tackled by understanding the processes of physical chemistry with molecular science. In particular, we use laser spectroscopy and quantum chemistry to study atmospheric molecules, interstellar molecules, and constituent molecules in human exhalation.

Magnetism

All substances are composed of particles with magnetic properties. The magnetic property of materials can be investigated with microwave spectroscopy, which may play a role in solving environmental problems.

Energy, Environmental and Sustainable Chemistry

Energy, environmental and sustainable chemistry focuses on new materials to tackle the challenges of renewable energy generation and recycling and develop sustainable methods to improve existing processes and make use of renewable resources. (Note: Students enrolling in 2023 or after may not be able to pursue certain research themes from this module for their senior project.)

Subjects taught in English and in Japanese (advanced courses)

Agricultural Science (English-Japanese hybrid program)

The agricultural science program offered by the Discovery Program for Global Learners (GDP) benefits from the vast educational and research resources available at the School of Agriculture. For the first two years of this program, GDP students study basic science and agricultural science courses in English while studying Japanese intensively. From the second year, students start taking agricultural science courses taught in Japanese at the School of Agriculture with the aid of a personalized academic Japanese training program. Students may also do independent studies with faculty members to supplement their studies. From the third year on, GDP students study together with School of Agriculture students. GDP students interested in this program with minimal or no Japanese proficiency at the time of admission are encouraged to study Japanese on their own before enrollment. Students with higher Japanese proficiency may take higher-level Japanese courses to further improve their language skills or select elective courses instead of Japanese.

Study Model:

First Year	Second Year	Third Year	Fourth Year
Introductory Science Courses (in English)	Agricultural Science Courses (in English)	Advanced Laboratory in Agricultural Science	Senior Project Research and Seminars
GDP Common Courses	Elective Courses	Common	
Japanese Language Courses	Academic Japanese Training	Agricultural Science Courses (in Japanese)	
			Common

Subjects taught in Japanese

Schools and faculty outside the Discovery Program open to students with advanced Japanese proficiency

Students with advanced Japanese proficiency (level N2 Japanese Language Proficiency Test (JLPT) or above at the time of enrollment) may be able to study in other schools and faculty at Okayama University if they have the prerequisite level of knowledge in their intended field study.

- School of Letters
- School of Education
- Faculty of Law
- School of Economics
- School of Science
- Medical School (Faculty of Health Sciences only)
- School of Pharmaceutical Sciences (Department of Pharmaceutical Technology only)
- School of Engineering
- School of Agriculture

For more details on the program curriculum, visit our website at https://discovery.okayama-u.ac.jp/en/about_discovery/.

Japanese language courses at Okayama University

The Department of Japanese Language at Okayama University offers a variety of Japanese courses to help students develop their language skills. Courses range from level 1 (beginner) to level 7 (advanced). Students take a placement test during orientation to determine the most appropriate level and then select Japanese classes that suit their goals (e.g., integrated classes, skill-based classes, topic-based classes).

Academic Japanese courses are also available to Discovery students who take coursework in Japanese.

Example: Japanese courses offered in term 3 and term 4, 2023 (subject to change)

Term 3 and Term 4

Level		Integrated Classes (classes per week)	Skill-based and Topic-based Classes (classes per week)					
Elementary	1	Japanese 1 (8)		Reading and Writing 1 (4)				
	2	Japanese 2 (8)	Basic Kanji and Vocabulary (2)		Reading and Writing 2 (4)			
Intermediate	3	Japanese 3 (8)						
	4	Japanese 4 (8)	Intermediate Kanji and Vocabulary (2)			Media Literacy 1 (2)	Extensive Reading 1 (2)	Japanese through Films 1 (2)
	5	Japanese 5 (8)						
Advanced	6	Japanese 6 (8)						
	7		Applied Japanese (Reading B)(2)	Study of Okayama (2)				
			Applied Japanese (Listening B)(2)					
			Applied Japanese (Writing A)(2)					
			Applied Japanese (Speaking A)(2)					

Frequently asked questions

What kind of degree will I earn?

Students who complete the four-year program earn a Bachelor of Arts and Sciences. The diploma states that the recipient is a graduate of the Discovery Program, regardless of the department or faculty under which the student completes their senior project.

Who can apply?

The program welcomes applicants of all nationalities from both Japan and abroad. Current Discovery students include international students from around the globe, returnees to Japan, and graduates of high schools in Japan. The program accepts about 30 students through international admission, and 30 through domestic admission each year.

Do I need to know Japanese?

Japanese language proficiency is not a requirement for October admissions, except for those who wish to take courses in Japanese from faculties outside the Discovery Program. However, Japanese proficiency equivalent to JLPT level N1 is required for April admissions. For more details on eligibility requirements, see page 10.

English is not my first language. Can I take classes to improve my English?

Yes, students who wish to improve their English proficiency may enroll in English classes offered through the Discovery Program or the Center for Liberal Arts and Language Education.

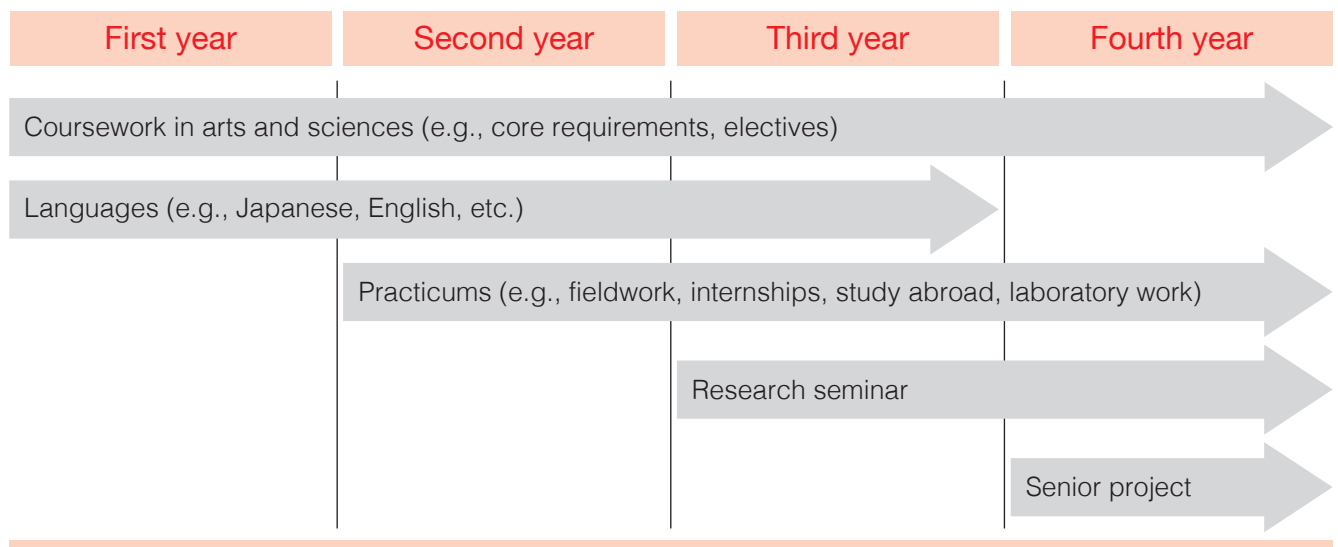
What is an interdisciplinary approach?

An interdisciplinary approach means students can cross traditional department boundaries by creating a personalized curriculum that reflects their interests and career goals. Students can combine courses from a range of disciplines.

What can I study?

All students work closely with an academic advisor to develop an individual study program leading to a senior project on a topic of their choice (see page 5-7). Students must demonstrate both academic knowledge and strong critical thinking skills by gathering, analyzing, and interpreting information, and presenting their findings to their faculty and peers. A full list of courses offered by the Discovery Program is available on our website.

Your four-year schedule might look like this:



What kind of job can I find after graduation?

The program emphasizes practical, hands-on education featuring fieldwork, internships, study abroad, and laboratory work. Students will learn to deal with complex issues from a variety of perspectives, and present creative, concrete solutions to real-life problems. With advanced language and critical-thinking skills and cross-cultural experiences, Discovery graduates will be prepared for careers in a wide range of fields.

Applying to the Discovery Program

Selection process

Submission of application documents:

All applications and accompanying documents must reach our office by the deadline. Late submissions or incomplete applications will not be considered.



First screening:

The Selection Committee reviews application documents and posts results of the first screening on our website. Successful applicants move on to the final screening.



Final screening (interviews):

Those who pass the first screening have interviews online. See page 11 for interview guidelines.



Successful applicants announced:

Results of final screening and pass rates posted online. Accepted applicants are notified individually by post, and are provided with detailed information on admission procedures.

Important dates

	Application Period 1 April or October 2024 Admission	Application Period 2 October 2024 Admission only
Application period	October 2, 2023 – October 31, 2023	December 1, 2023 – January 19, 2024
Results of first screening announced	November 17, 2023 (10:00 JST*)	February 20, 2024 (13:00 JST*)
Final screening (interviews)**	December 2, 2023	March 2, 2024
Results of final screening announced	December 18, 2023 (10:00 JST*)	March 22, 2024 (13:00 JST*)
Deadline to complete admission procedures***	January 26, 2024	May 7, 2024

*JST: Japan Standard Time

**Applicants should check interview dates, and confirm they will be available before applying.

***Students who do not pass the final screening may be waitlisted and offered admission after the deadline to complete admission procedures. If openings are still available, an additional application period may be announced on the website around the end of May.

Number of seats available for 2024 Admission

	April 2024 Admission	October 2024 Admission
Application Period 1	5 students	10 students
Application Period 2	not applicable	20 students

Admission eligibility requirements

1	Commitment to Okayama University	Applicants should have a strong desire to study in the Discovery Program for Global Learners at Okayama University and must be prepared to enroll in the program if they are accepted.
2	Students must satisfy ONE of the following requirements:	<ul style="list-style-type: none"> a) Complete a 12-year course of education as designated by the Ministry of Education in Japan or abroad prior to enrollment (students who have skipped grades are also eligible). b) Complete 11 years of education abroad, plus a Japanese university pre-session course designated by MEXT (Ministry of Education, Culture, Sports, Science and Technology of Japan). c) Earn certification or test results equivalent to a 12-year course of education outside of Japan, and be 18 years of age or older prior to enrollment. d) Complete a curriculum of 11 years or more equivalent to a senior high school education outside of Japan, as designated by MEXT. Refer to the webpage for details. e) Earn an International Baccalaureate Diploma (IB Full Diploma) from the International Baccalaureate Organization. f) Earn an Abitur from the Federal Republic of Germany. g) Earn a Baccalaureate from the French Republic. h) Earn a GCE Advanced Level (GCEA) required for university matriculation in Great Britain and Northern Ireland. i) Complete 12 years of education in an internationally-certified program (WASC, CIS, ACSI).
3	Advanced Japanese language proficiency (for April admission ONLY)	<ul style="list-style-type: none"> • April applicants must pass JLPT level 1 (N1) or demonstrate similar ability in order to understand instructions and participate in school activities such as orientation in Japanese. • Japanese language ability is NOT required for October admission.
4	Legal residence status in Japan (for applicants who do not have a Japanese passport or legal long-term residency)	Successful applicants must have a valid passport and obtain a suitable visa to study in Japan legally prior to enrollment. For information on student visas, see page 20.

For questions regarding admission eligibility requirements, please contact the Discovery Office at admission_discovery@adm.okayama-u.ac.jp.

Application checklist

Details for each item are provided on pages 12-17.

*The following items must be submitted to the office within the application period, as stated on page 9.

To be submitted online: To be sent by post:

- ☐ Application form
- ☐ Personal statement
- ☐ ID photo
- ☐ Application fee

- ☐ Official transcripts
- ☐ School profile
- ☐ Certificate of graduation or statement certifying expected graduation date
- ☐ Letter of academic evaluation
- ☐ Letter of recommendation
- ☐ Standardized test results (where applicable)
- ☐ Official English proficiency test scores (where applicable)
- ☐ Proof of Japanese proficiency (where applicable)

Interview guidelines

- The Discovery Program conducts interviews in English in lieu of a written entrance examination.
- Interviews will be conducted online via Skype or a similar application.
- Interviews will take approximately 20-30 minutes.
- Applicants may be asked questions about their interest in their proposed area(s) of study, and coursework taken to date to prepare for college-level study in these area(s). Please have one or two piece(s) of blank paper(s) and a pen or a pencil with you in case your interviewers ask you to draw diagrams during the interview.
- Students who wish to pursue their studies in other schools or faculties at Okayama University will be asked questions in Japanese about their intended field of study.
- The Admissions staff will conduct pre-interview checks via Skype a few days before the online interview to troubleshoot connection problems. Applicants will be informed of the date and time of their pre-interview check and interview time via email.
- **Applicants who do not complete the pre-interview check will not be allowed to participate in the interview.**
- Applicants are expected to check their email regularly for updates throughout the application process, but particularly prior to the interview process. Failure to respond to emails in a timely manner may result in an applicant being dropped from the selection process.

Requesting a different interview time

- The Admissions staff makes every effort to ensure that candidates are assigned a reasonable interview time during daytime or early evening hours in their local time zone.
- We recognize that assigned times may sometimes require applicants to reschedule their regular daily activities. However, requests for time changes will be considered only in extreme cases such as illness, unavoidable emergencies, or other conflicts that would cause unreasonable inconvenience to the applicant.
- The Selection Committee will make the final determination on such requests, and may require documentation before granting approval.
- Applicants who wish to request a change in their pre-interview check or interview time should contact the Discovery Office at admission_discovery@adm.okayama-u.ac.jp.

Application documents to submit by post

All application documents are available online at

https://discovery.okayama-u.ac.jp/en/prospective_students/admission/

*The following items must be submitted to the office within the application period, as stated on page 9.

1	Official transcripts (REQUIRED)	<ul style="list-style-type: none"> • If you have already graduated from secondary school, submit full transcripts of all courses taken in secondary school (most recent 2-3 years). • If you are still in secondary school, submit transcripts of all classes completed to date (most recent 2-3 years). • If you have attended more than one secondary school, submit transcripts from each school (most recent 2-3 years). • If you are currently in a tertiary or post-secondary educational institute, submit transcripts of all classes completed to date, as well as transcripts of courses taken in secondary school. • Transcripts may be photocopies, but they must be enclosed in a sealed envelope and signed across the flap by a school official. • Transcripts in languages other than English or Japanese must be accompanied by an English or Japanese translation.
2	School profile (REQUIRED) <i>Use online form.</i>	<ul style="list-style-type: none"> • Complete the online form, enclose in a sealed envelope and ensure that it is signed across the flap by a school official.
3	Copy of graduation certificate or statement certifying expected graduation date (REQUIRED) <i>Use online form for statement certifying expected graduation date.</i>	<ul style="list-style-type: none"> • Applicants who have already graduated from secondary school should submit a photocopy of their graduation certificate. • Applicants who have not yet graduated will be required to submit a copy of their certificate after arriving on campus. • Certificates in languages other than English or Japanese should be accompanied by an English or Japanese translation.
4	Letter of academic evaluation (REQUIRED) <i>Use online form.</i>	<ul style="list-style-type: none"> • The letter of academic evaluation must be written by someone at your secondary school (even if you are currently attending a tertiary institution) such as a school principal, counselor, or teacher, even if the evaluator does not know or remember you well. • The evaluator should confirm your years of attendance and graduation date, and provide information about your academic performance while at the school. • The letter of academic evaluation must be in English or Japanese.
5	Letter of recommendation (REQUIRED) <i>Use online form.</i>	<ul style="list-style-type: none"> • The letter of recommendation should be written by someone who knows you well and has interacted directly with you in a supervisory position at school, work, or through extracurricular activities - a teacher, manager, boss, coach, or advisor. • In addition to commenting on your ability to work independently, think creatively, communicate effectively, and maintain motivation, the recommender should also provide information about your personal interests, abilities, and accomplishments. • The letter of recommendation must be in English or Japanese.

6	Standardized test results (OPTIONAL)	<ul style="list-style-type: none"> Applicants who have taken standardized exams typically used for university admission in their country, such as the SAT or ACT, may submit photocopies of official results. Applicants who reside in countries where the Examination for Japanese University Admission for International Students (EJU) by the Japan Student Services Organization (JASSO) is offered may submit photocopies of official scores. Applicants who have an International Baccalaureate (IB) Diploma may submit a photocopy of their diploma and an official certificate of their IB exam results, issued by the International Baccalaureate Office. Applicants who have not yet received their IB Diploma may send official transcripts of IB predicted scores, endorsed by the principal or a guidance counselor at their school. Please note that once applicants are admitted, they will be asked to submit a photocopy of their IB Diploma and an official certificate of their IB exam results.
7	Official English proficiency test scores* REQUIRED for applicants who have not received their last five years of formal education in English.	<ul style="list-style-type: none"> Scores must be from exams taken after September, 2021. Unofficial score reports or photocopies are acceptable for the application process, although applicants may have to submit the original certificates upon request. The Discovery Program does not have minimum requirement scores. English ability is evaluated through standardized tests scores, writing samples, and interviews etc. Students must submit scores from one or more of the following tests: Cambridge English/The EIKEN Test in Practical English Proficiency (実用英語技能検定)/GTEC Advanced or GTEC Basic or GTEC Core or GTEC CBT/IELTS/TEAP/ TEAP CBT/TOEFL iBT/TOEIC Listening & Reading Test and TOEIC Speaking & Writing Tests, IB English Score (Predicted Scores included). Details are provided on pages 14-15.
8	Proof of Japanese proficiency* (for April admission ONLY)	<ul style="list-style-type: none"> Applicants for April Admission must submit photocopies of the certificate of Japanese language proficiency (e.g., JLPT score report) or documents demonstrating similar ability (e.g., Japanese teacher's language assessment report). Applicants for October Admission who have taken the JLPT are encouraged to submit their scores as optional material. Usually, JLPT N2 level proficiency or above is required to take coursework in Japanese.

*If applicants are not able to take the English proficiency test or the JLPT as a result of unforeseeable circumstances related to the COVID-19 pandemic or for any other reason, please contact the Discovery Office by email at least one month prior to the application period start date.

Applicants outside of Japan should send documents via registered airmail such as Speed Post, DHL, FedEx, OCS, or EMS. Applicants in Japan should send documents via kakitome (書留).

For queries regarding information not included in this guide, please contact the Discovery Office:

Discovery Program for Global Learners, Okayama University
2-1-1 Tsushima-naka, Kita-ku, Okayama 700-8530 JAPAN
Tel.+81-86-251-7912, 7915 Fax.+81-86-251-7201
Email: admission_discovery@adm.okayama-u.ac.jp

List of accepted English proficiency tests

Test Providers	Qualification/Certification	Notes
Cambridge Assessment English	Cambridge English (C2 Proficiency) Cambridge English (C1 Advanced) Cambridge English (B2 First for Schools) Cambridge English (B2 First) Cambridge English (B1 Preliminary for Schools) Cambridge English (B1 Preliminary) Cambridge English (A2 Key for Schools) Cambridge English (A2 Key)	<ul style="list-style-type: none"> For Cambridge English Language Certificates, individual pass or fail results are not taken into consideration. It will only be valid if the score range for which the certificate is issued can be used to demonstrate their English proficiency.
Eiken Foundation of Japan	EIKEN Test in Practical English Proficiency EIKEN Grades: 1, Pre-1, 2, Pre-2, 3 <ul style="list-style-type: none"> EIKEN S-Interview EIKEN S-CBT 	<ul style="list-style-type: none"> Okayama University reviews the CSE scores for EIKEN tests (rather than the pass/fail grade). Score certificates must display the test scores for all 4 skills (listening, reading, writing, speaking) to be accepted.
Benesse Corporation	GTEC (CBT) GTEC (Advanced) GTEC (Basic) GTEC (Core)	<ul style="list-style-type: none"> Only scores recorded on the GTEC 4-skill official score certificate are accepted.
IDP:IELTS Australia British Council	International English Language Testing System (IELTS) Academic Module	
Eiken Foundation of Japan	<ul style="list-style-type: none"> Test of English for Academic Purposes (TEAP) Test of English for Academic Purposes Computer Based Test (TEAP CBT) 	
Educational Testing Service	TOEFL iBT® Test	<ul style="list-style-type: none"> Please submit the “TOEFL iBT® Test Date” score, not the “My Best” score. TOEFL iBT Home Edition is not accepted.
TOEIC	TOEIC® Listening & Reading Test and TOEIC® Speaking & Writing Tests	<ul style="list-style-type: none"> Both the results of the TOEIC® Listening & Reading Test and the TOEIC® Speaking & Writing Tests must be submitted. Results from the IP Test (group exam) are not accepted.

(Note 1) English language certifications or qualifications for tests that were taken at home are not accepted.

(Note 2) Please refer to “Application Documents to submit by post” to confirm the validity period of the scores of the English language certificates/qualifications accepted by Okayama University for admission to undergraduate courses, regardless of the validity period specified by the organizations that administer the tests.

(Note 3) In addition to the above tests, certain faculties may accept other English proficiency test scores (measuring 4 skills).

(Note 4) Applicants who have taken English A or English B for IB Diploma qualification may submit your IB exam results (Predicted Scores included) instead of English proficiency test scores.

Accepted English proficiency tests and their CEFR equivalent levels

Type	CEFR Comparison					
	A1	A2	B1	B2	C1	C2
Cambridge Assessment English (Note 1)	100-119	120-139	140-159	160-179	180-199	200-230
EIKEN Grade 1-3 (Note 2)	1400-1699	1700-1949	1950-2299	2300-2599	2600-3299	
GTEC CBT, Advanced, Basic, Core *Tests before March 2023	270-689	690-959	960-1189	1190-1349	1350-1400	
GTEC CBT, Advanced, Basic, Core *Tests after April 2023	260-679	680-929	930-1179	1180-1349	1350-1400	
IELTS (Note 3)			4.0-5.0	5.5-6.5	7.0-8.0	8.5-9.0
TEAP (4 skills)		135-224	225-308	309-374	375-400	
TEAP CBT (4 skills)		235-415	420-595	600-795	800	
TOEFL iBT® Tests			42-71	72-94	95-120	
TOEIC® Listening & Reading Test And TOEIC® Speaking & Writing Tests (Note 4)	320-620	625-1145	1150-1555	1560-1840	1845-1990	

(Note 1) Includes the following tests: C2 Proficiency, C1 Advanced, B2 First/B2 First for Schools, B1 Preliminary/B1 Preliminary for Schools, A2 Key/A2 Key for Schools

The corresponding CEFR levels for each Cambridge English exam and the equivalent score ranges for which the certificate is issued are as follows:

Cambridge English examinations	Score ranges	Corresponding CEFR levels
C2 Proficiency	180-230	C1, C2
C1 Advanced	160-210	B2, C1, C2
B2 First/B2 First for Schools	140-190	B1, B2, C1
B1 Preliminary/B1 Preliminary for Schools	120-170	A2, B1, B2
A2 Key/A2 Key for Schools	100-150	A1, A2, B1

(Note 2) Includes the following tests: EIKEN, EIKEN S-Interview, EIKEN S-CBT

The corresponding CEFR levels for the Practical English Proficiency Test (Eiken) and the equivalent score ranges for which the certificate is issued are as follows:

Grade of EIKEN	Score ranges	Corresponding CEFR levels
Eiken Grade 1	2,304-3,299	B2, C1
Eiken Grade Pre-1	1,980-2,599	B1, B2
Eiken Grade 2	1,728-2,299	A2, B1
Eiken Grade Pre-2	1,400-1,949	A1, A2
Eiken Grade 3	1,400-1,699	A1

(Note 3) Includes the following tests: International English Language Testing System (IELTS) Academic Module

(Note 4) For TOEIC, the TOEIC® Speaking & Writing Tests scores should be multiplied by 2.5 and added together

(Note 5) The CEFR equivalent levels for IB English A and English B exam results are below:

English B (Standard Level): (Exam results: CEFR equivalent levels) 7: C1, 5-6: B2, 4: B1

English A (Standard Level/Higher Level) or English B (Higher Level):

(Exam results: CEFR equivalent levels) 7: C2, 6: C1, 5: B2, 4: B1

Application documents to submit online

Go to https://discovery.okayama-u.ac.jp/en/prospective_students/admission/

1	Okayama University application form (REQUIRED)	<ul style="list-style-type: none">• The application form MUST be completed online in one session otherwise information entered will not be saved.• Save a copy of the completed form for your records.• For details on the information required for the online application form, see below.
2	Personal statement (REQUIRED)	<ul style="list-style-type: none">• Download the file (Microsoft Word or PDF).• Complete the personal statement in English.• For more information on the personal statement, see page 17.
3	ID photo (REQUIRED)	<ul style="list-style-type: none">• Submit a 4 cm long x 3 cm wide color photo taken within the last 3 months, showing a front view without headgear (except for religious purposes) or sunglasses, above chest level, with a solid-color background.• The photo will be used to identify the applicant at the interview.
4	Application fee (REQUIRED)	<ul style="list-style-type: none">• Submit the application fee of ¥17,000 via credit card using the online application system.• If payment by credit card is not possible, please contact the Discovery Office at admission_discovery@adm.okayama-u.ac.jp for other payment options.• The application fee cannot be waived or returned.• The application fee cannot be refunded unless the application is incomplete, not accepted, or the fee is resubmitted in error.

Online application form

This form must be completed in one session. Collect all necessary information before starting:

- Name, current address, and phone number
- Emergency contact information
- Skype ID (Please create a free Skype account if you do not have one.)
- Intended area(s) of study within the Discovery Program. See our website for more details: https://discovery.okayama-u.ac.jp/en/about_discovery/
- Full educational background from primary through secondary school, including school names, locations, and dates attended
- English language proficiency tests scores (where applicable), including date and location of test, scores, and registration number
- List of other standardized tests taken (OPTIONAL)
- Names of other universities you are applying to (OPTIONAL: your response will not affect your application)

When you are ready to complete the online form, go to <https://e-apply.jp/n/okayama-gdp>.

Personal statement

The personal statement is a valuable opportunity for you to convince the Selection Committee that you are a great candidate for the Discovery Program. Take the time to think carefully, and revise as needed before submitting your statement. Read through our website and other materials carefully in order to improve your understanding of the Discovery Program and write a successful personal statement. In particular, read through the curriculum section on our website and explain concretely how our curriculum will help you meet your goals. We will evaluate your statement for content, quality, and clarity of writing.

Complete all sections in English. Respond to all questions. Part A and Part B should be written in essay format. Although you may consult teachers, counselors, and friends, all final writing must be your own words. If we detect plagiarism, including material copied from websites, your application will not be considered any further. If you advance to the interview stage, you may be asked to answer questions or elaborate on your statement. *Okayama University strongly prohibits the use of any kind of generative AI software in essay writing.

Part A: Statement of Interest

Write a short essay of 450 to 500 words answering the following questions:

- What is/are your current interest(s) and goal(s)?
- What life experiences led you to your current interest(s) and goal(s)?
- What is your proposed study plan (e.g., “Track”/“Cluster” of the Discovery Program) ?
- How does your proposed course of study relate to your interest(s) and goal(s)?

Part B: Topic of Interest (if you have selected “Social Science & Humanities” as your first choice in “10. Desired Area(s) of Study” in online application form)

Write a short essay of 450 to 500 words on the topic of your interest mentioned in Part A answering the following questions:

- What is the topic of your interest? How is it discussed in news, books, journals and other sources?
- Why are you interested in this topic? Why should others be interested in this topic?
- What questions would you like to explore further on this topic once you enter the university?

*You may use any citation style to provide references for the sources of information you use in the essay.

Part B: Topics of Interest (if you have selected “Science & Applied Science” as your first choice in “10. Desired Area(s) of Study” in online application form)

Explain any two of the following topics in one A4 sheet or within the specified frame:

- A 60-kg person stands on a scale inside an elevator. When the elevator starts to move upward, the reading on the scale increases uniformly from 60 kg to a maximum of 66 kg, then decreases uniformly to a minimum of 54 kg, and returns uniformly to 60 kg at the end. Draw the acceleration-time graph and indicate the maximum and minimum values of acceleration and the time that the speed reaches the maximum. Explain your results together with necessary equations and force diagrams.
- We live on the surface of the Earth surrounded by air. Devise a method to experimentally measure the density of the air near the Earth's surface and explain its principles involved.
- In the periodic table, elements are arranged in increasing atomic number into 7 horizontal rows called periods and 18 vertical columns called groups. Explain one of the physical properties that represent the repeating periodicity observed in the horizontal row of elements. Next, pick one of the 18 groups and describe the similarities shared by the group you chose.
- What are the uses of green chemistry in agriculture, transportation, construction, pharmaceuticals and packaging? Give some examples of the application of green chemistry in day to day life.
- Animal homeostasis is regulated by the coordination of the autonomic nervous system and the endocrine system. Explain an example of homeostasis regulated by these two systems.

Note: Set and specify the detailed conditions necessary to explain the problem. Also, explain other phenomena that occur by the same principle.

Part C: Extracurricular Activities

List up to five extracurricular activities in descending chronological order with the most recent one first.

Extracurricular activities may be events, committees, clubs, sports, conventions, communities, internships, jobs, study abroad, CAS (Creativity, Action, Service) activities, or volunteer work you have been involved in. Mention your assigned responsibilities and/or leadership roles. Mention any awards, qualifications, or certificates you may have earned.

Important notes for applicants

- Applications must arrive at our office by 17:00 (JST) on the last day of the application period. Incomplete or late applications will not be accepted. It is the applicant's responsibility to ensure that all required documents reach the Discovery Office by the deadline.
- Application documents will not be returned for any reason.
- Applications may be rejected at any time, including during or after admission or enrollment, if it is determined that the applicant has made a false statement on any part of the application.
- If a document with a former name is submitted, please attach a document stating both your former and current names, and the date of the name change.
- Applicants may reapply. However, please update and revise the application documents as necessary. Please note that all documents must be resubmitted, and new application fees will apply.
- When an applicant engages in or attempts to engage in any misconduct, or fails to follow the instructions of the interviewers, they may be disqualified from the selection process and a complaint may be filed with the police. The following actions are considered as misconduct:
 - (a) Intentionally providing false information on the Application Form and submitting an application with a photo of someone other than the applicant.
 - (b) Providing answers to other examinees or assisting in cheating.
 - (c) Using any item other than those specified by Okayama University during the exam.
 - (d) Using any equipment other than the one specified for use during the interview.
 - (e) Communicating with others during the examination period.
 - (f) Any other act that may compromise the fairness of the exam or be considered misconduct by Okayama University.

University policy on the use of personal information

Personal information provided in the application documents will be used only for the selection process, university administrative procedures, or as data for the purpose of evaluating and improving the university selection process and educational system. When personal information is used in a publication, it must be presented in such a manner that individuals cannot be identified. In addition to the selection process, personal information may be used for the following purposes:

- Information required by the University Students Affairs System, including the names, birth dates, and gender of successful applicants.
- Assessment results required to determine the academic qualifications of successful applicants who apply for admission fee exemption or postponement or tuition waivers.
- Information required by the University Management System to process university tuition fees and tuition waivers, including the names, birth date, and gender of successful applicants.

Applicants with disabilities

Applicants with disabilities should submit documents explaining their individual circumstances by the deadlines below so that the university can make appropriate arrangements regarding accommodation for coursework, etc.

Deadline	Applicants for Application Period 1: September 8, 2023 Applicants for Application Period 2: November 10, 2023
Procedures	Complete the online Preliminary Consultation Form and submit it along with a doctor's note and a copy of your disability certificate (if issued). Download: https://discovery.okayama-u.ac.jp/en/prospective_students/admission/
Submission	Email: admission_discovery@adm.okayama-u.ac.jp

Disclosure of exam information

Entrance exam information will be posted online between May 1 and May 31, 2024. If you would like access to the information, please contact the Discovery Office.

Accepting an offer of admission

A detailed admissions guide will be sent to successful applicants along with the announcement of application results.

Students who wish to accept their offer of admission must submit the following documents by post, ensuring they arrive by the deadlines listed below.

- Receipt for payment of admission fee (see page 20)
 - *If the admission fee is revised prior to admission, the new fee will apply.
- Photocopy of IB Diploma and official certificate of IB exam results (where applicable)
- Other documents as designated or requested by the university

Deadlines for receipt of all documents

Application Period 1	January 26, 2024	Application Period 2	May 7, 2024
----------------------	------------------	----------------------	-------------

- Please note that accepting an offer of admission requires paying the admission fee AND submitting all documents stated above by the relevant deadline.
- If an applicant fails to complete all admission procedures by the deadline, he or she will be considered to have declined the offer of admission.
- In rare cases, admission fee exemption or postponement may be granted. Details are provided in the admissions guide sent to successful applicants.
- Applicants who complete the admissions process but wish to decline admission later must first contact the Discovery Office by email, and then submit a letter of request to decline admission to the President of Okayama University by post. The letter must reach our office by March 31, 2024 for April admission, and by September 30, 2024 for October admission. The letter must include the following information:
 - application number
 - name of the program to which the applicant was accepted
 - date the letter was written
 - reason for declining admission
 - applicant's signature

*An applicant will be permitted to decline admission only after his/her request to decline is approved.

Student visas

In order to study in Japan as an international student, foreign nationals must obtain a student visa. Students must possess a valid passport to begin the visa process. The university will contact students approximately two to three months prior to the start of their first term to provide information on how to begin the application process.

*Students who have a Japanese passport or foreign nationals whose current status of residence in Japan is either "Dependent" or "Permanent Resident" and who do not wish to change to a student visa need not apply for a student visa.

*The visa application schedule and travel restrictions are subject to change based on the COVID-19 situation in Japan and students' home countries.

Fees

Admission Fee

- There is a one-time fee of **¥282,000 (2024 estimate)** to be paid shortly after the offer of admission is made.
- The university does not offer scholarships to cover the admission fee.
- Students who have trouble meeting the deadline due to financial difficulty may apply for a postponement. If granted a postponement, the student is still responsible to cover the admission fee after arriving on campus.
- If the admission fee is revised prior to admission, the new fee will apply.

Tuition

- The annual tuition fee of **¥535,800 (2024 estimate)** is paid in two installments of **¥267,900 (2024 estimate)**.
- The first tuition payment is not due until after arrival on campus.
- If the tuition fee is revised prior to admission or while the student is enrolled, the new fee will apply.

For more information about fees, visit the website below:

https://www.okayama-u.ac.jp/eng/international_admissions/Tuition.html

It is important that new students arrive on campus prepared to cover all tuition fees and living expenses. Students are highly encouraged to apply for financial aid from government or private funding organizations.



Scholarships and financial aid

Japanese Government (MEXT) Full Scholarship for Students from ASEAN countries

- Four outstanding candidates from ASEAN countries who are successfully accepted through international admissions for October 2024 will be nominated for a Japanese Government Full Scholarship for Student Priority Placement by the Ministry of Education, Culture, Sports, Science and Technology (MEXT).
- This scholarship covers the following:
 - one-time admission fee
 - tuition fees
 - monthly living allowance (117,000 yen/month) for four years of study (with excellent academic standing) airfare to and from Japan (only at the beginning and the end of the 4-year undergraduate program).
- The selection process will start after the announcement of application results.
- *This 4-year full scholarship is dependent on excellent academic standing. Scholarship recipients' academic standing is re-evaluated each year to confirm continued eligibility.

Discovery Scholarships

- **Four full-tuition scholarships** will be awarded to outstanding applicants accepted through international admissions for April 2024/October 2024. Scholarship recipients will be announced in conjunction with the announcement of application results.
- Applicants who apply via international admissions **during the first application period will have priority**. If scholarships are not awarded during the first period, applicants who apply during the second period will be considered.
- The scholarship may be renewed for up to four years provided the recipient maintains excellent academic standing.
- Scholarship recipients must be non-Japanese citizens or Japanese citizens with dual nationality, and may not be receiving full scholarships for undergraduate studies in Japan from other government or private organizations.

Partial or Full Exemption of Admission Fees/Tuition Fees (Students with Japanese citizenship or Japanese permanent residency)

- In accordance with new laws regarding financial aid at tertiary institutions, students with Japanese citizenship or permanent residency enrolling in the Discovery Program will be eligible to apply for financial aid (partial or full exemption of admission fees and tuition fees).
- For further details, please refer to the following websites:
 - Okayama University <https://www.okayama-u.ac.jp/tp/student/syugakushien.html>
 - MEXT <https://www.mext.go.jp/kyufu/index.htm>
 - JASSO <https://www.jasso.go.jp/shogakukin/kyufu/index.html>

JASSO Scholarships

- JASSO (Japan Student Services Organization) also offers scholarships for international students who are residing outside of Japan at the time of admission to a Japanese university.
- Okayama University applies for this scholarship on behalf of eligible students. Successful applicants receive a monthly stipend of ¥48,000 for the first twelve months after arrival for April admission, and for the first six months after arrival for October admission.
- Most applications for eligible international students in 2022 were successful.

Other Scholarships for International Students

- Other scholarships and financial aid schemes which international students may apply for are listed on the website: <https://intl.okayama-u.ac.jp/support/scholarships/list/>

Scholarships for Japanese Students

- Scholarships and financial aid schemes which Japanese students may apply for are listed on the website (in Japanese): http://www.okayama-u.ac.jp/tp/student/seikatu_a2.html

Student Life

Housing

On-campus housing

International Student Shared House

International students residing outside of Japan at the time of application to the Discovery Program are granted housing priority for the International Student Shared House. If space is not available, some students may be housed in other dormitories on campus.

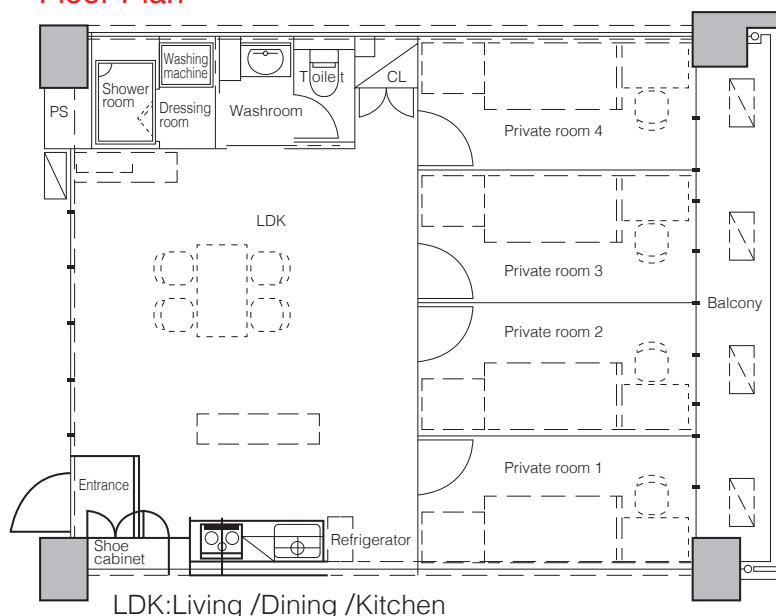
Eligibility	Number of units	Area	Floor
Single international students	30 units (four students per unit)	Common space: 29.6m ² Private room: 7.9m ²	1st~5th

- Each unit includes four furnished single-occupancy private rooms and a shared common space. Four students of the same gender share each unit.
- Rent: ¥23,000/month (subject to change)
 - *Utilities: Monthly fixed charge of ¥7,000 regardless of usage (subject to change).
 - *includes internet service charges.
 - *on-campus housing does not offer meals.
- A non-refundable one-time deposit of ¥30,000 (subject to change) will apply to all new residents.
- Length of stay: 5 months (minimum) to 6 months (maximum) (subject to change).
- Furnishings:
 - shared common space: shoe cabinet, curtains, heater/air-conditioner unit, shower room, washroom, toilet, kitchen facilities, refrigerator, microwave, kettle, dining table with four chairs, washing machine, vacuum cleaner, washing lines (on balcony), Wi-Fi, and flashlight
 - private rooms: desk, chair, bookshelf, closet, single bed, curtains, heater/air-conditioner unit, and internet access points (both wired and Wi-Fi)
 - *Bed linen and blankets can be purchased prior to moving in.

For more information, visit the website at

<https://intl.okayama-u.ac.jp/en/support/housing/dormitory/sharehouse/>

Floor Plan



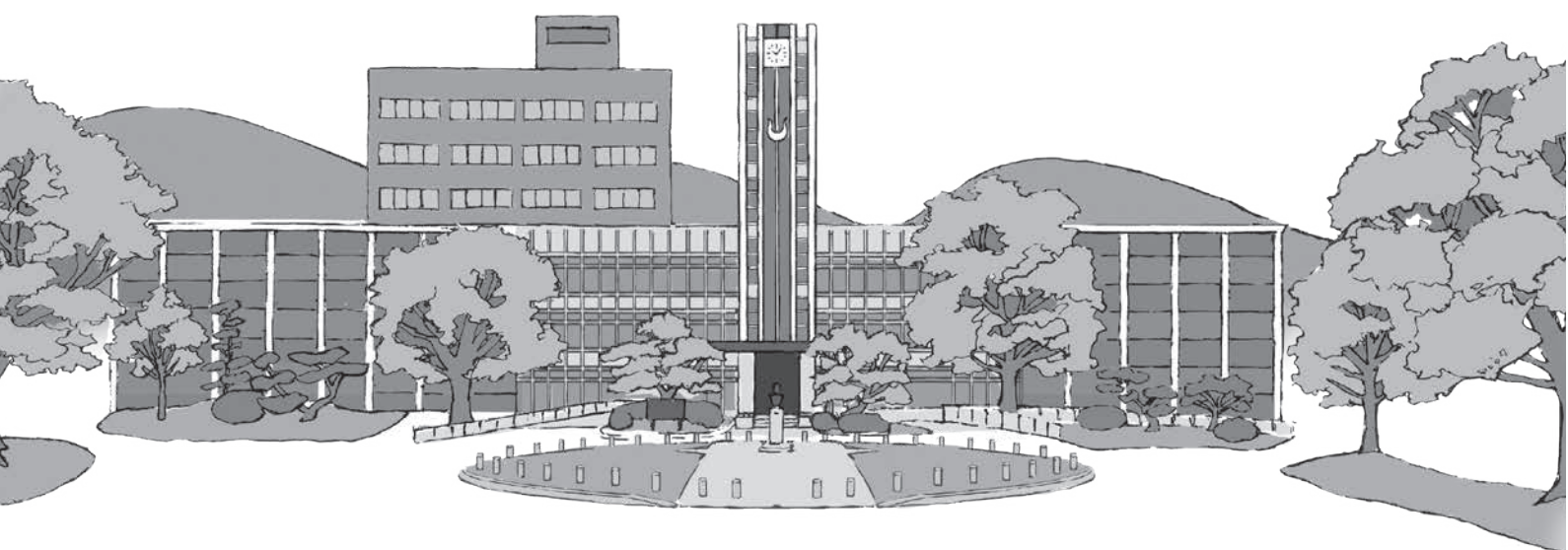
Off-campus housing

- Students who wish to rent an apartment off-campus, should find a private apartment by themselves. If you would like to find an apartment before coming to Japan, the real estate agencies recommended by the university can help you. Please contact them directly if you wish. For more information, visit the website at <https://intl.okayama-u.ac.jp/en/support/admissions/housing/apartment/>
- Private apartments near campus typically range from ¥30,000 to ¥60,000 per month. Security deposits and non-returnable fees totaling up to 4 months' rent are common.

Estimated living costs for 2024 (subject to change)

	Monthly costs	Annual costs
books and supplies		¥50,000~
rent (International Student Shared House)	¥23,000	
utilities	¥10,000	
food	¥30,000	
health insurance	¥ 2,000	
personal Wi-Fi/phone	¥10,000	
miscellaneous expenses	¥10,000	
TOTAL	¥85,000	¥50,000~

It is recommended that you bring about ¥100,000 with you to cover initial expenses.



Campus facilities and services

University Co-op

The Co-op has three locations on Tsushima Campus: Peach Union, Muscat Union, and Pione Union.

The Co-op provides the following services and facilities for students:

- Subsidized cafeterias offering a range of options, including vegetarian and halal dishes
- Campus bookstore
- Convenience store, travel center, and barber shop
- Housing services and ticket sales

L-Café

The L-Café offers an open, friendly, and supportive environment for students studying Japanese, English, and other languages. The Nihongo (Japanese) café, held online once a week, gives students a chance to practice their language skills and learn about Japanese culture. All students are welcome to drop by during opening hours, or check the calendar for scheduled events.

Website: <https://www.ipec.okayama-u.ac.jp/lcafe/>

Center for Career Services

The center provides individual consultation and support for career development for students with advanced Japanese proficiency.

Clubs and Circles

With a range of sports and culture clubs, including martial arts (e.g., karate, aikido), tennis, photography, tea ceremony, dance, and music, every student can find something of interest.

University Libraries

- Okayama University libraries have the largest collection of books in Okayama.
- Students have access to the Central Library (Tsushima Campus), Shikata Branch Library (Shikata Campus), and the Institute of Plant Science and Resources Branch Library (Kurashiki Campus).
- The recently renovated Central Library includes rooms built with local Japanese cypress wood, creating an aromatic space especially conducive to studying.
- Students may use the Learning Commons for group study and conversation, or separate areas for quiet self-study.
- Accepted students may use the university library prior to enrollment. Detailed information is available on the University Library website at https://www.lib.okayama-u.ac.jp/index_e.html (English) and <https://www.lib.okayama-u.ac.jp/index.html> (Japanese).

Medical care and insurance

Health Center

The Health Center offers periodic medical check-ups, health consultations, and other services free of charge. When necessary, the center also makes referrals to local hospitals.

National Health Insurance

- International students who have been granted a visa valid for more than 3 months are required to join the National Health Insurance system regardless of their visa status (those on short-term or diplomatic visas are exempt), even if they are already covered by insurance in their own country.
- Applications are accepted at the municipal office. More details will be provided during the on-campus orientation.
- Health insurance premiums for students are about ¥2,000 per month and cover approximately 70% of all medical costs including hospitalization and dental care.

Personal Accident Insurance for Students Pursuing Education and Research (*Gakkensai*), and Liability Insurance coupled with *Gakkensai* (*Futaibaiseki*)

- The university offers Personal Accident Insurance for Students Pursuing Education and Research (*Gakkensai*) and Liability Insurance coupled with *Gakkensai* (*Futaibaiseki*), provided by Japan Educational Exchanges and Services (JEES). This insurance is available to all students for an estimated one-time cost of ¥4,660 (subject to change). It covers accidents and emergencies which may occur while engaged in educational or research activities for the duration of enrollment at Okayama University.
- Insurance premiums for *Gakkensai* and *Futaibaiseki* are extremely low, and can provide peace of mind to students and parents. All students are highly encouraged to enroll in preparation for unforeseen accidents or other emergencies. Students may be required to enroll in *Gakkensai* and *Futaibaiseki* if they plan to participate in laboratory work, fieldwork, or internships.



Admissions Policy

The Discovery Program for Global Learners is based on collaboration and mutual learning among students of diverse backgrounds, including international students, Japanese returnees, and graduates of high schools in Japan. The program emphasizes practical learning including internships and fieldwork. Students acquire specialized knowledge through courses suited to their future goals without the restraints of faculty or departmental divisions. The university offers courses to help students discover areas they wish to explore, forging their own paths toward the future. While cooperating with others from different cultures and backgrounds, students acquire the global and practical discernment to enable them to act skillfully in problem-solving situations.

Students are encouraged to acquire specialized knowledge and skills through a unique program of courses of their own choosing. At the advanced stage of their learning, all students undertake a senior project. This project gives students the opportunity to further develop the ability to analyze information in a multifaceted and creative manner, and transmit precise information effectively. Students grapple with an individual research theme, which they decide for themselves under the guidance of an advising professor. Essentially, the Discovery Program helps students gain the ability to initiate action for social innovation from the local to the global level, thereby developing young leaders who are capable of contributing to the sustainable development of global society.

Profile of Exemplary Candidates:

- *Students who show interest in diverse cultures and societies, and have a desire to play an active role on the global stage.*
- *Students who are willing to actively study a broad range of fields, including foreign languages, on their own initiative.*
- *Students who are able to communicate with others well, and are prepared to tackle complex issues by cooperating with their peers.*

In order to actively participate in the program, applicants are expected to have:

- *Sufficient English ability to take part in problem-solving activities in collaboration with students from multicultural backgrounds.*
- *The ability to formulate personal opinions and communicate their views clearly to others.*
- *Basic knowledge and study skills required for successful learning in their selected field.*





University Mark

OKAYAMA UNIVERSITY

DISCOVERY PROGRAM FOR GLOBAL LEARNERS

2-1-1 Tsushima-naka, Kita-ku, Okayama 700-8530 JAPAN
 Tel.+81-86-251-7912, 7915 Fax.+81-86-251-7201
 Facebook: <https://www.facebook.com/discovery.at.ou/>
 Email: admission_discovery@adm.okayama-u.ac.jp

<https://discovery.okayama-u.ac.jp/en>

Discovery Program for Global Learners

Search

