

Appendix B: Prerequisite Maps

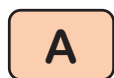
Prerequisite maps are there to help you understand how courses are connected, and in which academic term they are offered. Detailed prerequisites are indicated in the Course List in Appendix B.

Here are some explanations of the prerequisite maps to follow.

1) Course Color Key:

- An orange color indicates that the course will be offered every year (See Example 1).
- A white color indicates that the course will be offered every two years (See Example 2).
- A purple color indicates that the course will be offered two times in three years (See Example 3).
- A blue color indicates that the course will be offered every three years (See Example 4).

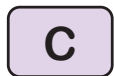
Example 1



Example 2



Example 3



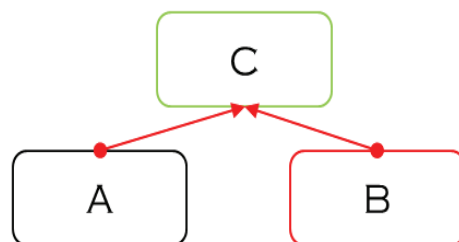
Example 4



2) Arrow Key:

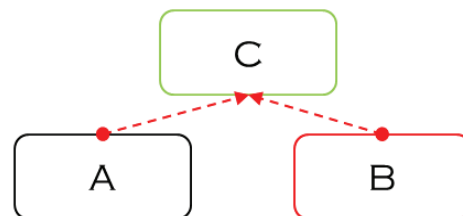
- Solid arrows ●→ indicate prerequisites (or co-requisites) (see Example 1).
- Dashed arrows ●--→ indicate prerequisites (or co-requisites) with options (see Example 2).

Example 1



<A> AND are required to take <C>

Example 2

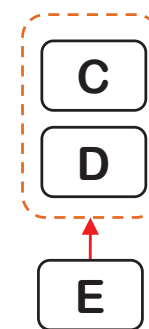


<A> OR are required to take <C>

3) Course Group Key:

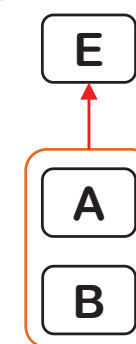
- Dashed lines surrounding multiple courses indicate courses with the same prerequisites (or co-requisites) (see example 1).
- Solid lines surrounding multiple courses indicate multiple prerequisites (or co-requisites) (see example 2).
- Dashed lines surrounding multiple courses indicate prerequisites (or co-requisites) with options (see example 3).

Example 1



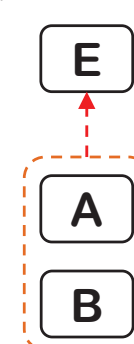
<E> is a prerequisite for <C> and <D>

Example 2



<A> AND are prerequisite for <E>

Example 3



<A> OR is prerequisite for <E>

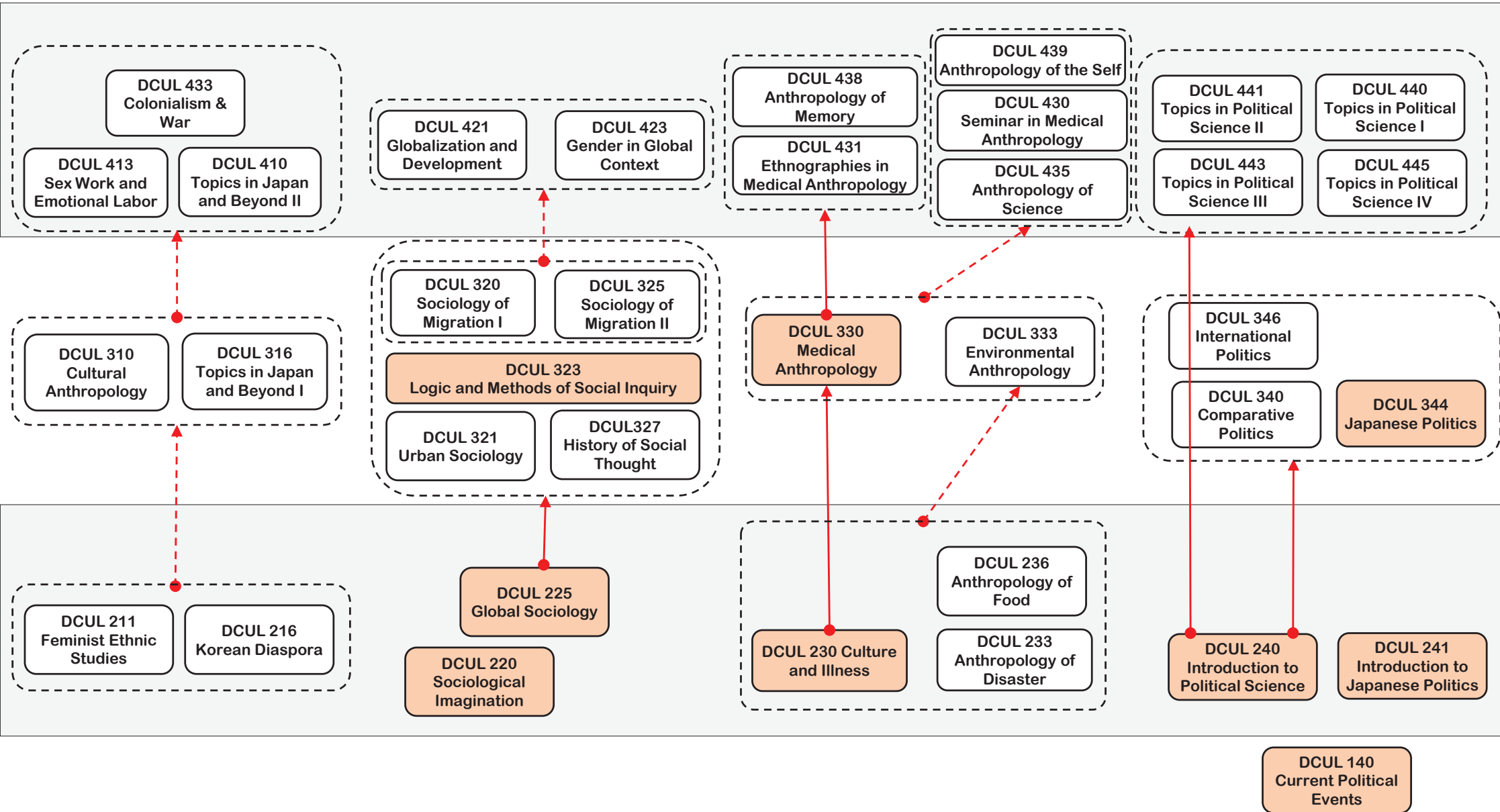
Cultural Diversity and Communities

Japan and Beyond

Migration and Communities

Environment and Health

Governance



Social Innovation and Entrepreneurship

Management

economics

Nonprofit Management and Social Entrepreneurship

